


	<p align="center"><b>ICS Weekly Project Report</b> June 6, 2022</p>
	<p align="center">ISD #465 Litchfield Public Schools 2019 Referendum</p>

### **Lake Ripley Elementary Interior Renovations**

- **Completed Week ending Friday, June 3, 2022**
  - Boiler Room
    - Hang ductwork
  - Hallways/Classrooms
    - Placed floor protection and temporary walls
    - Staff moved out-remove furniture, and technology
  - Roof work
    - Material delivered
- **Planned for Week ending Friday, June 10, 2022**
  - Boiler Room
    - Hang ductwork
    - Hydronic piping
    - Plumbing demolition
    - Shut down domestic water for temporary hook ups
  - Hallways/Classrooms
    - Continue floor protection and install temporary construction walls
    - Demolition
  - Bathrooms
    - Demolition
  - Roof work
    - Removal of metal roofing

### **Middle School/High School Interior Renovations**

- **Completed Week ending Friday, June 3, 2022**
  - Middle School – Restrooms – Completed mechanical and electrical ceiling finishes.
  - Middle School – Restrooms – Completed toilet partitions.
  - High School – Completed Ph. 3 Owner move-out and removals.
  - Completed remaining scoreboard installation.
  - Started installing floor protection.
- **Planned for Week ending Friday, June 10, 2022**
  - Construct temp. walls and install construction signage.

	<b>ICS Weekly Project Report</b> June 6, 2022
	ISD #465 Litchfield Public Schools 2019 Referendum

- High School – CTE, Weights Cardio
  - Plumbing, mechanical, and electrical demolition.
- High School – Classrooms & Corridors
  - Construct temp walls and install construction signage.
  - Ceiling demolition.
  - Plumbing, mechanical, and electrical demolition.

### **Middle/High School Parking Lot**

- **Completed for Week ending Friday, June 3, 2022**
  - Delivered light poles
- **Planned for Week ending Friday, June 10, 2022**
  - Reclaim bituminous pavement (asphalt)
  - Site removals
  - Start subgrade excavation



## ICS Weekly Project Report

June 6, 2022



ISD #465 Litchfield Public Schools  
2019 Referendum

### Lake Ripley – Classroom Demolition





## ICS Weekly Project Report

June 6, 2022



ISD #465 Litchfield Public Schools  
2019 Referendum

### Lake Ripley – Hallways Demolition





**ICS Weekly Project Report**  
June 6, 2022



ISD #465 Litchfield Public Schools  
2019 Referendum

**Lake Ripley –Bathroom Demolition**





ICS Weekly Project Report  
June 6, 2022



ISD #465 Litchfield Public Schools  
2019 Referendum

**Middle/High School Site Work- Removal/Reclaim of Bituminous Pavement**





**ICS Weekly Project Report**  
June 6, 2022



ISD #465 Litchfield Public Schools  
2019 Referendum

**Middle School – Restrooms – Toilet partitions and lighting installed.**



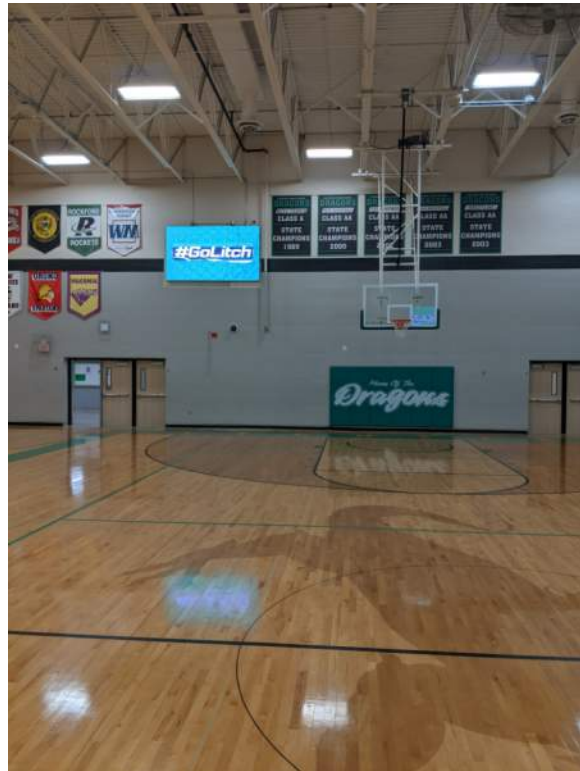


**ICS Weekly Project Report**  
June 6, 2022



ISD #465 Litchfield Public Schools  
2019 Referendum

**High School – Remaining scoreboards installed.**







## ICS Weekly Project Report



June 6, 2022



ISD #465 Litchfield Public Schools  
2019 Referendum

### **High School – Classroom and CTE space packing and moving completed.**





	<p align="center"><b>ICS Weekly Project Report</b> June 13, 2022</p>
	<p align="center">ISD #465 Litchfield Public Schools 2019 Referendum</p>

### **Lake Ripley Elementary Interior Renovations**

- **Completed Week ending Friday, June 10, 2022**
  - Boiler Room
    - Hang ductwork
    - Hydronic piping
    - Plumbing demolition
    - Shut down domestic water for temporary hook ups
  - Hallways/Classrooms
    - Continue floor protection and install temporary construction walls
    - Demolition
    - Started hanging HVAC ductwork
  - Bathrooms
    - Demolition
  - Roof work
    - Removal of metal roofing
  
- **Planned for Week ending Friday, June 17, 2022**
  - Boiler Room
    - Continue to hang ductwork
    - Continue hydronic piping
    - Continue equipment installation
  - Hallways/Classrooms
    - Continue demolition
    - Continue hanging ductwork
  - Bathrooms
    - Frame walls
  - Roof work
    - Prep for metal roofing work

### **Middle School/High School Interior Renovations**

- **Completed Week ending Friday, June 10, 2022**
  - High School – Completed temporary partitions and floor protection.

	<p align="center"><b>ICS Weekly Project Report</b> June 13, 2022</p>
	<p align="center">ISD #465 Litchfield Public Schools 2019 Referendum</p>

- High School – Commons – Completed concrete slab preparation for terrazzo
- High School – CTE, Weights Cardio
  - Continued plumbing, mechanical and electrical demolition.
  - Installed shoring and started masonry wall demolition.
- High School – Classrooms and Media Center
  - Completed ceiling demolition.
  - Completed mechanical demolition.
- High School – Corridors
  - Continued mechanical and electrical demolition.
- **Planned for Week ending Friday, June 17, 2022**
  - Middle School – Restrooms – Above ceiling inspection and install ceiling tiles.
  - Middle School – Restrooms – Install specialties and complete final inspection.
  - High School – CTE, Weights Cardio
    - Continue masonry demolition.
    - Begin structural steel installation.
    - Start UG Plumbing.
  - High School – Classrooms and Media Center
    - Begin ductwork installation in classrooms.
  - High School – Corridors
    - Complete mechanical and electrical demolition.
    - Begin running plumbing, mechanical, and HVAC mains.

**Middle/High School Parking Lot**

- **Completed for Week ending Friday, June 10, 2022**
  - Reclaim bituminous pavement (asphalt)
  - Site removals
- **Planned for Week ending Friday, June 17, 2022**
  - Continue site removals
  - Start subgrade excavation



ICS Weekly Project Report  
June 13, 2022



ISD #465 Litchfield Public Schools  
2019 Referendum

### Lake Ripley – Boiler Room Piping, Equipment Installation





## ICS Weekly Project Report

June 13, 2022



ISD #465 Litchfield Public Schools  
2019 Referendum

### Lake Ripley – Classroom Ductwork Installation





## ICS Weekly Project Report

June 13, 2022



ISD #465 Litchfield Public Schools  
2019 Referendum

### Lake Ripley – Hallway Floor Protection





## ICS Weekly Project Report

June 13, 2022



ISD #465 Litchfield Public Schools  
2019 Referendum

### Lake Ripley –Bathroom Demolition





## ICS Weekly Project Report

June 13, 2022



ISD #465 Litchfield Public Schools  
2019 Referendum

### Middle/High School Site Work- Removals







## ICS Weekly Project Report

June 13, 2022



ISD #465 Litchfield Public Schools  
2019 Referendum

### **High School – CTE / Weights & Cardio – Mechanical, electrical and masonry demolition.**



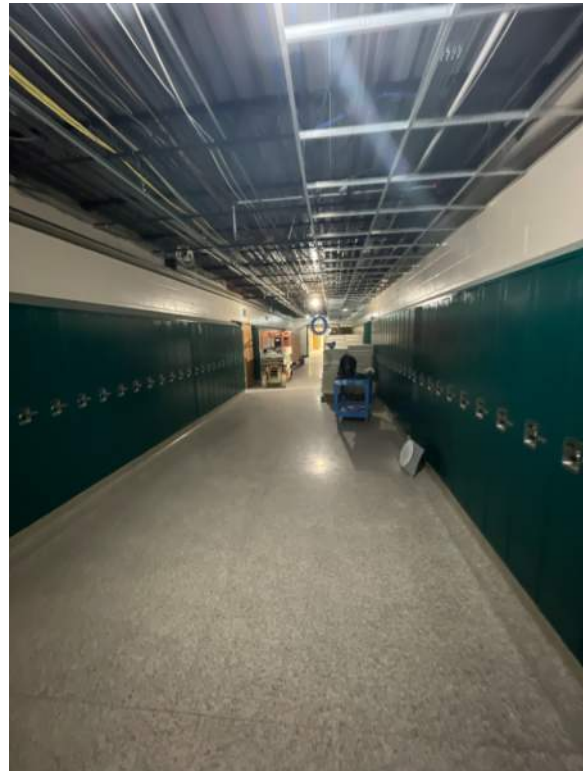


ICS Weekly Project Report  
June 13, 2022



ISD #465 Litchfield Public Schools  
2019 Referendum

**High School – Classrooms and corridors – Ceiling and duct demolition.**





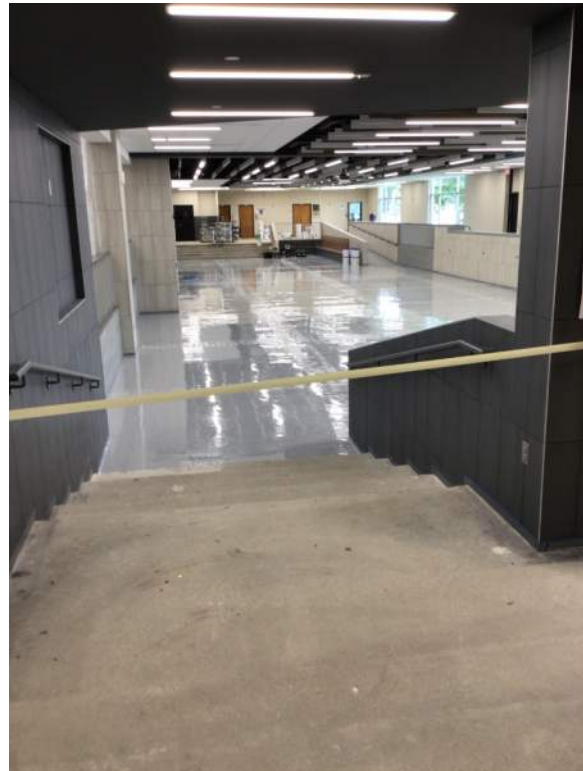
## ICS Weekly Project Report



June 13, 2022



ISD #465 Litchfield Public Schools  
2019 Referendum

### **High School – Commons – Terrazzo progress.**





	<p align="center"><b>ICS Weekly Project Report</b> June 20, 2022</p>
	<p align="center">ISD #465 Litchfield Public Schools 2019 Referendum</p>

### **Lake Ripley Elementary Interior Renovations**

- **Completed Week ending Friday, June 17, 2022**
  - Boiler Room
    - Continued to hang ductwork
    - Continued hydronic piping
    - Continued equipment installation
  - Hallways/Classrooms
    - Continued demolition
    - Continued hanging ductwork
    - Started wall framing and plumbing
  - Bathrooms
    - Completed demolition
  - Roof work
    - Prep for metal roofing work
  
- **Planned for Week ending Friday, June 24, 2022**
  - Boiler Room
    - Continue equipment piping and ductwork
  - Hallways/Classrooms
    - Continue hanging ductwork
    - Continue to frame walls
    - Continue plumbing
  - Bathrooms
    - Frame walls
  - Roof work
    - Metal roof work

### **Middle School/High School Interior Renovations**

- **Completed Week ending Friday, June 17, 2022**
  - High School – CTE, Weight Cardio
    - Continued demolition.
    - Concrete saw-cutting and removal for underground plumbing.

	<p align="center"><b>ICS Weekly Project Report</b> June 20, 2022</p>
	<p align="center">ISD #465 Litchfield Public Schools 2019 Referendum</p>

- Continued mechanical and electrical rough-in.
  - High School – Classrooms and Media Center
    - Continued demolition
    - Started installing branch duct and VAVs.
    - Started electrical rough-in.
  - High School – Corridors
    - Started installing duct mains.
    - Started structural steel for new roof top units.
- **Planned for Week ending Friday, June 24, 2022**
  - Middle School – Restrooms
    - Complete above ceiling inspection and install acoustical ceiling tiles.
    - Complete toilet accessories/specialties and final inspection.
  - High School – CTE, Weight Cardio
    - Start structural steel required for new roof top units.
    - Continue plumbing, mechanical and electrical rough-in.
  - High School – Classrooms and Media Center
    - Continue installing branch duct and VAVs.
    - Continue electrical rough-in.
  - High School – Corridors
    - Continue duct mains.
    - Continue structural steel for new roof top units.

**Middle/High School Parking Lot**

- **Completed for Week ending Friday, June 17, 2022**
  - Finish site removals
- **Planned for Week ending Friday, June 24, 2022**
  - Start subgrade excavation
  - Underground storm structure and piping material delivery



ICS Weekly Project Report  
June 20, 2022



ISD #465 Litchfield Public Schools  
2019 Referendum

### Lake Ripley – Boiler Room Piping, Equipment Installation





## ICS Weekly Project Report

June 20, 2022



ISD #465 Litchfield Public Schools  
2019 Referendum

### Lake Ripley – Classroom Wall Framing, Plumbing, Electrical Rough Ins





**ICS Weekly Project Report**  
June 20, 2022



ISD #465 Litchfield Public Schools  
2019 Referendum

**Lake Ripley – Re-roofing Progress**







ICS Weekly Project Report  
June 20, 2022



ISD #465 Litchfield Public Schools  
2019 Referendum

**Middle/High School Site Work- Material Delivery**





ICS Weekly Project Report  
June 20, 2022



ISD #465 Litchfield Public Schools  
2019 Referendum

**High School – CTE – Concrete saw-cutting and masonry demolition.**





## ICS Weekly Project Report

June 20, 2022



ISD #465 Litchfield Public Schools  
2019 Referendum

### **High School – Classrooms branch duct and Media Center demolition progress.**





## ICS Weekly Project Report



June 20, 2022



ISD #465 Litchfield Public Schools  
2019 Referendum

### **High School – Corridors – Structural steel and duct mains.**





	<p align="center"><b>ICS Weekly Project Report</b> June 27, 2022</p>
	<p align="center">ISD #465 Litchfield Public Schools 2019 Referendum</p>

### **Lake Ripley Elementary Interior Renovations**

- **Completed Week ending Friday, June 24, 2022**
  - Boiler Room
    - Continued ductwork and hydronic piping
  - Classrooms
    - Framed walls, hung ductwork and plumbing
  - Bathrooms
    - Finished underground plumbing and backfilled
  - Roof work
    - Metal roof work
  
- **Planned for Week ending Friday, July 1, 2022**
  - Boiler Room
    - Continue ductwork and hydronic piping
  - Classrooms
    - Continue to frame walls, hang ductwork and plumbing
  - Bathrooms
    - Wall framing
    - plumbing
  - Roof work
    - Metal roof work

### **Middle School/High School Interior Renovations**

- **Completed Week ending Friday, June 24, 2022**
  - Middle School – Restrooms – Completed required inspections.
  - High School – CTE, Weights, and Cardio
    - Started installing structural steel.
    - Continued plumbing, mechanical and electrical rough-in.
  - High School – Classrooms and Media Center
    - Completed demolition.
    - Continued installing branch duct and VAVs.
    - Started insulating branch duct and piping.

	<p align="center"><b>ICS Weekly Project Report</b> June 27, 2022</p>
	<p align="center">ISD #465 Litchfield Public Schools 2019 Referendum</p>

- Continued electrical rough-in.
  - High School – Corridors
    - Completed structural steel for new RTUs.
    - Continued installing duct and piping mains.
    - Continued electrical rough-in.
- **Planned for Week ending Friday, July 1, 2022**
  - Middle School – Restrooms – Install acoustical ceiling tiles and final clean.
  - High School – CTE, Weights, and Cardio
    - Continue installing structural steel.
    - Continue plumbing, mechanical and electrical rough-in.
    - Begin masonry walls and structural piers.
  - High School – Classrooms and Media Center
    - Complete branch duct and piping.
    - Continue insulating branch duct and piping.
  - High School – Corridors
    - Continue duct and piping mains.

### **Middle/High School Parking Lot**

- **Completed for Week ending Friday, June 24, 2022**
  - Subgrade excavation
  - Water hydrant installation
- **Planned for Week ending Friday, July 1, 2022**
  - Storm structure installation
  - Remove watermains
  - Remove existing storm sewer



**ICS Weekly Project Report**  
June 27, 2022



ISD #465 Litchfield Public Schools  
2019 Referendum

**Lake Ripley – Restroom Underground Plumbing Completed and Backfilled**





# ICS Weekly Project Report

June 27, 2022



ISD #465 Litchfield Public Schools  
2019 Referendum

## Lake Ripley – Boiler Room Progress







# ICS Weekly Project Report

June 27, 2022



ISD #465 Litchfield Public Schools  
2019 Referendum

## Lake Ripley – Classroom and Special Education Build Back





A LEGENCE Company

## ICS Weekly Project Report

June 27, 2022



ISD #465 Litchfield Public Schools

2019 Referendum

### Middle/High School Site Work- Underground Structures





A LEONCE Company

## ICS Weekly Project Report

June 27, 2022



ISD #465 Litchfield Public Schools

2019 Referendum

### **Middle School – Restrooms – Above ceiling finishes completed. Specialties installed.**





**ICS Weekly Project Report**  
June 27, 2022



ISD #465 Litchfield Public Schools  
2019 Referendum

**High School – CTE, Weights, and Cardio – Structural steel beams and bar joists.**





**ICS Weekly Project Report**  
June 27, 2022



ISD #465 Litchfield Public Schools  
2019 Referendum

**High School – Media Center – Demolition progress. Duct work progress.**





**ICS Weekly Project Report**  
June 27, 2022



ISD #465 Litchfield Public Schools  
2019 Referendum

**High School – Corridors – Duct and piping mains. Structural steel bar joists.**

