


	<p align="center"><b>ICS Weekly Project Report</b> July 5, 2022</p>
	<p align="center">ISD #465 Litchfield Public Schools 2019 Referendum</p>

### **Lake Ripley Elementary Interior Renovations**

- **Completed Week ending Friday, July 1, 2022**
  - Boiler Room
    - Continued piping new equipment
  - Classrooms
    - Started new ceiling installation
    - Drywall, taping and mud new walls
  - Bathrooms
    - Wall framing
    - Fixture placement
  - Roof work
    - Metal roof work
  
- **Planned for Week ending Friday, July 8, 2022**
  - Boiler Room
    - Continue piping new equipment
  - Classrooms
    - Continue wall framing in SPED and flex rooms
    - Mechanical and electrical rough ins for SPED and flex rooms
    - Continue new ceiling grid in classrooms
    - Start installing diffusers, grills, registers, and light fixtures in ceilings of classrooms
    - Start installing fin tube radiation and casework in classrooms
    - Continue to tape, mud new walls in classrooms
  - Bathrooms
    - Install domestic water piping and plumbing mains
    - Wall framing
    - Pipe insulation
    - Electrical and low voltage rough ins
  - Roof work
    - Continue metal roof work

	<p align="center"><b>ICS Weekly Project Report</b> July 5, 2022</p>
	<p align="center">ISD #465 Litchfield Public Schools 2019 Referendum</p>

### **Middle School/High School Interior Renovations**

- **Completed Week ending Friday, July 1, 2022**
  - High School – CTE, Weights, and Cardio
    - Continued masonry and structural steel.
    - Continued plumbing, mechanical, and electrical rough-in.
  - High School – Classrooms and Media Center
    - Completed branch duct and piping.
    - Started metal stud wall framing.
    - Continued mechanical insulation.
  - High School – Corridors
    - Completed duct mains.
    - Started creating roof openings for mechanical curbs.
- **Planned for Week ending Friday, July 8, 2022**
  - High School – CTE, Weights, and Cardio
    - Continue masonry and structural steel.
    - Continue mechanical and electrical rough-in.
  - High School – Classrooms and Media Center
    - Begin in-wall rough-in.
    - Continue mechanical insulation.
  - High School – Corridors
    - Continue roof openings for mechanical curbs.
    - Continue electrical and low-voltage cabling rough-in.

### **Middle/High School Parking Lot**

- **Completed for Week ending Friday, July 1, 2022**
  - Continued underground storm structures
  - Removal of existing storm structure and water mains
- **Planned for Week ending Friday, July 8, 2022**
  - Remaining retention pond structure delivery



A LEONCE Company

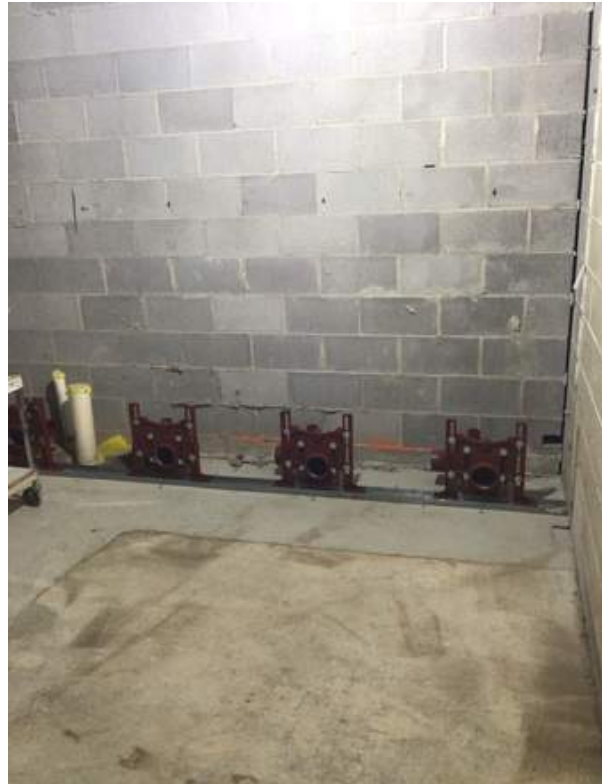
## ICS Weekly Project Report

July 5, 2022



ISD #465 Litchfield Public Schools  
2019 Referendum

### Lake Ripley – Restrooms Fixture Placement





A LEONCE Company

## ICS Weekly Project Report

July 5, 2022



ISD #465 Litchfield Public Schools  
2019 Referendum

### Lake Ripley – Boiler Room Progress





**ICS Weekly Project Report**  
July 5, 2022



ISD #465 Litchfield Public Schools  
2019 Referendum

**Lake Ripley – Classroom New Ceiling Grid and New Wall Taping**





A LEGENCE Company

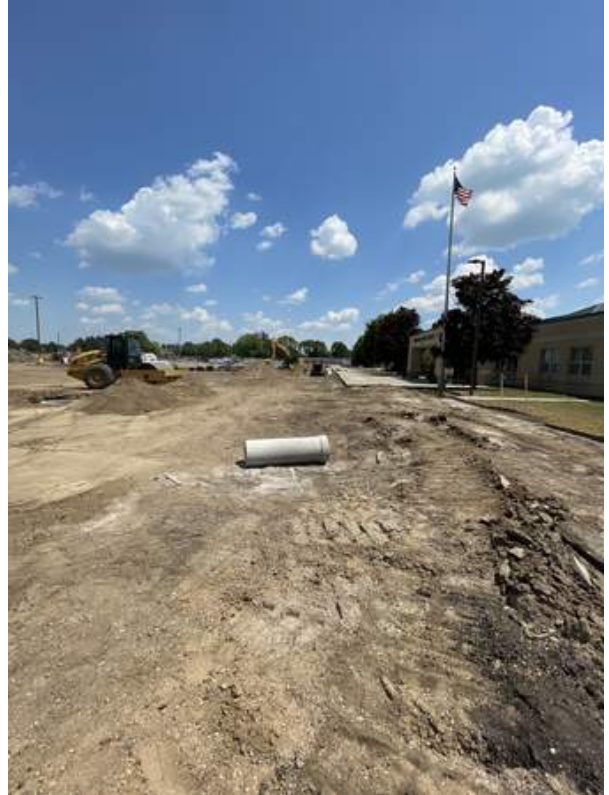
## ICS Weekly Project Report

July 5, 2022



ISD #465 Litchfield Public Schools  
2019 Referendum

### Middle/High School Site Work





ICS Weekly Project Report  
July 5, 2022



ISD #465 Litchfield Public Schools  
2019 Referendum

**High School – CTE, Weights, and Cardio – Underground plumbing and electrical rough-in.**





# ICS Weekly Project Report

July 5, 2022



ISD #465 Litchfield Public Schools  
2019 Referendum

## High School – Media Center & Classrooms – Wall framing and branch duct progress.







# ICS Weekly Project Report



July 5, 2022



ISD #465 Litchfield Public Schools  
2019 Referendum

## High School – Corridors – Roof openings for mechanical curbs and duct mains.





	<p align="center"><b>ICS Weekly Project Report</b> July 11, 2022</p>
	<p align="center">ISD #465 Litchfield Public Schools 2019 Referendum</p>

### **Lake Ripley Elementary Interior Renovations**

- **Completed Week ending Friday, July 8, 2022**
  - Boiler Room
    - Continued new equipment piping and connections
  - Classrooms
    - Casework Installation
    - Painting
    - Ceiling Installation
    - Diffusers, grills, and light fixtures placement within ceiling
  - Bathrooms
    - Wall framing
  - Roof work
    - Metal panel roofing
    - Delivery of insulation for built up roof
  
- **Planned for Week ending Friday, July 15, 2022**
  - Boiler Room
    - Continued new equipment piping and connections
  - Classrooms
    - Paint touch up
    - Continue casework installation
    - Wall framing of Special Education, Art, and Flex Rooms
    - Mechanical and electrical rough ins for Special Education, Art, and Flex Rooms
  - Bathrooms
    - Finish wall framing
    - Low voltage and electrical rough ins
  - Roof work
    - Metal panel roofing
    - Start built up roofing

### **Middle School/High School Interior Renovations**

- **Completed Week ending Friday, July 8, 2022**

	<p align="center"><b>ICS Weekly Project Report</b> July 11, 2022</p>
	<p align="center">ISD #465 Litchfield Public Schools 2019 Referendum</p>

- High School – CTE, Weights, and Cardio
  - Completed structural beams and bar joist.
  - Continued masonry.
  - Completed underground plumbing rough-in.
- High School – Classrooms and Media Center
  - Continued metal stud wall framing.
  - Started in-wall electrical rough-in.
  - Completed duct work, continued duct work and piping insulation.
- High School – Corridors
  - Completed piping mains.
  - Continued mechanical insulation.
  - Continued creating roof openings for mechanical curbs.
- **Planned for Week ending Friday, July 15, 2022**
  - High School – CTE, Weights, and Cardio
    - Complete concrete slab infills.
    - Continue mechanical and electrical rough-in.
    - Complete wall framing at spray booth.
  - High School – Classrooms and Media Center
    - Continue metal stud framing.
    - Complete structural steel.
    - Continue mechanical insulation.
  - High School – Corridors
    - Continue roof openings for mechanical curbs.
    - Continue electrical and low-voltage cabling rough-in.

### **Middle/High School Parking Lot**

- **Completed for Week ending Friday, July 8, 2022**
  - Removed light pole bases
- **Planned for Week ending Friday, July 15, 2022**
  - Delivery of remaining underground storm structure



A LEONCE Company

## ICS Weekly Project Report

July 11, 2022



ISD #465 Litchfield Public Schools  
2019 Referendum

### Lake Ripley – Boiler Room Progress





# ICS Weekly Project Report

July 11, 2022



ISD #465 Litchfield Public Schools  
2019 Referendum

## Lake Ripley – Classroom Casework Installation





A LEONCE Company

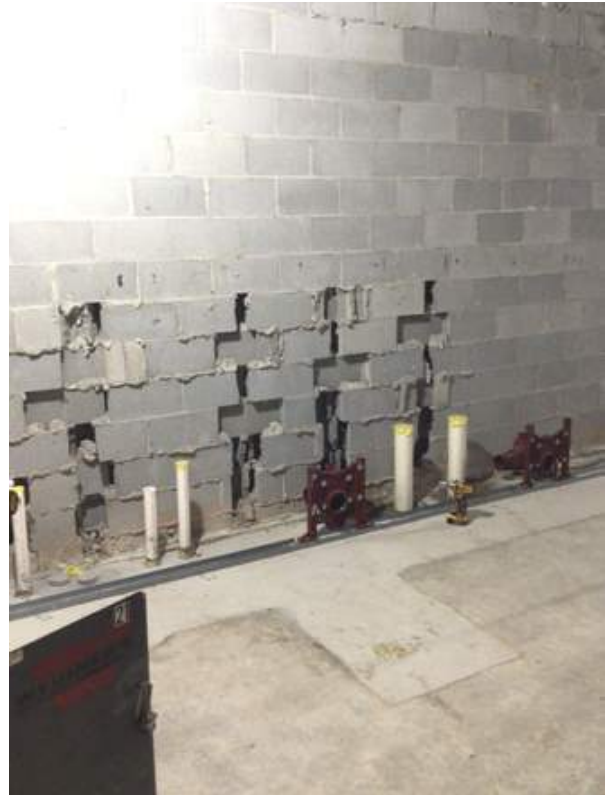
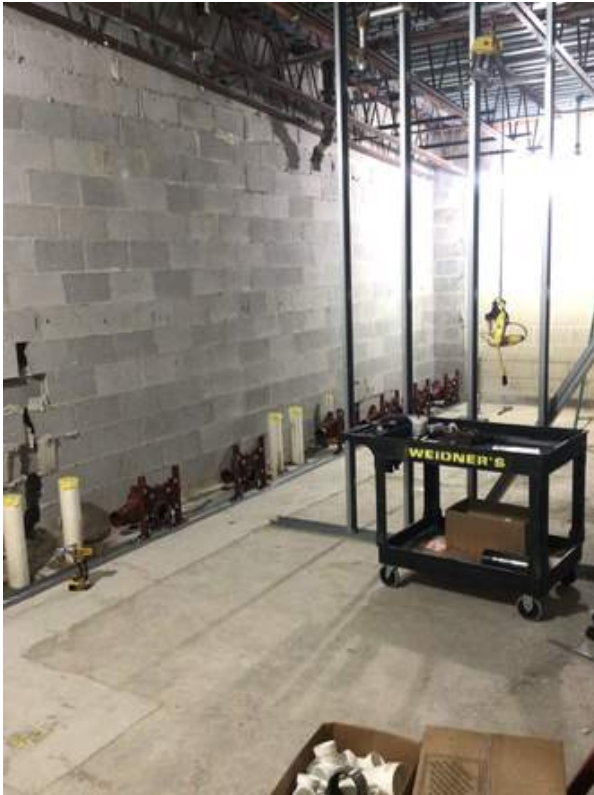
## ICS Weekly Project Report

July 11, 2022



ISD #465 Litchfield Public Schools  
2019 Referendum

### Lake Ripley – Bathrooms Progress





# ICS Weekly Project Report

July 11, 2022



ISD #465 Litchfield Public Schools  
2019 Referendum

## High School – CTE, Weights, and Cardio – Underground plumbing rough-in, overhead electrical rough-in.





ICS Weekly Project Report  
July 11, 2022



ISD #465 Litchfield Public Schools  
2019 Referendum

**High School – Media Center & Classrooms – In-wall electrical rough-in, overhead HVAC rough-in.**







# ICS Weekly Project Report



July 11, 2022



ISD #465 Litchfield Public Schools  
2019 Referendum



## High School – Corridors – HVAC rough-in and insulation.



	<p align="center"><b>ICS Weekly Project Report</b> July 18, 2022</p>
	<p align="center">ISD #465 Litchfield Public Schools 2019 Referendum</p>



### **Lake Ripley Elementary Interior Renovations**

- **Completed Week ending Friday, July 15, 2022**
  - Boiler Room
    - Continued new equipment piping and connections
  - Classrooms
    - Paint touch up
    - Continue casework installation
    - Wall framing of Special Education, Art, and Flex Room
    - Mechanical and electrical rough ins for Special Education, Art, and Flex Room
    - Completed some classrooms, cleaned, waxed, and moved boxes back
  - Bathrooms
    - Wall framing
    - Low voltage, electrical and mechanical rough ins
  - Roof work
    - Metal panel roofing
  
- **Planned for Week ending Friday, July 22, 2022**
  - Boiler Room
    - Continued new equipment piping and connections
  - Classrooms
    - Finish casework installation
    - Continue ceiling installation
    - Wall framing and mechanical/electrical rough in of Special Education, Art, and Flex Rooms
    - Mechanical and electrical rough ins for Special Education, Art, and Flex Rooms
  - Bathrooms
    - Finish wall framing
    - Continue low voltage, electrical and mechanical rough ins
  - Roof work
    - Metal panel roofing
    - Start built up roofing

	<p align="center"><b>ICS Weekly Project Report</b> July 18, 2022</p>
	<p align="center">ISD #465 Litchfield Public Schools 2019 Referendum</p>

### **Middle School/High School Interior Renovations**

- **Completed Week ending Friday, July 15, 2022**
  - High School – CTE, Weights, and Cardio
    - Continued concrete slab infills.
    - Completed the slab removal in the existing Weight Room.
    - Continued overhead mechanical and electrical rough-in.
    - Continued masonry walls and infills.
    - Started painting ceiling structure.
  - High School – Classrooms and Media Center
    - Completed mechanical insulation.
  - High School – Corridors
    - Completed mechanical piping.
    - Continued mechanical insulation.
    - Completed roof openings and roofing tie-ins for new mechanical equipment.
- **Planned for Week ending Friday, July 22, 2022**
  - High School – CTE, Weights, and Cardio
    - Complete concrete slabs and infills.
    - Continue masonry walls.
    - Complete painting ceiling structure.
    - Continue mechanical and electrical rough-in.
    - Continue roof openings for new mechanical equipment.
  - High School – Classrooms and Media Center
    - Start installing acoustical ceiling grid.
    - Start mechanical and electrical ceiling finishes.
    - Continue wall framing and in-wall electrical rough-in.
  - High School – Corridors
    - Continue electrical and low-voltage cabling rough-in.
    - Continue mechanical insulation.

 <p>A LEONCE Company</p>	<p><b>ICS Weekly Project Report</b> July 18, 2022</p>
	<p>ISD #465 Litchfield Public Schools 2019 Referendum</p>

**Middle/High School Parking Lot**

- **Completed for Week ending Friday, July 15, 2022**
  - Underground rate control filtration system perforated chambers delivered
- **Planned for Week ending Friday, July 22, 2022**
  - Excavation, install underground filtration system
  - Connect filtration system to underground storm system



A LEONCE Company

## ICS Weekly Project Report

July 18, 2022



ISD #465 Litchfield Public Schools

2019 Referendum

### Lake Ripley – Bathroom Progress





# ICS Weekly Project Report

July 18, 2022



ISD #465 Litchfield Public Schools  
2019 Referendum

## Lake Ripley – Some Area B Classroom Completed and Move In, Clean, Wax



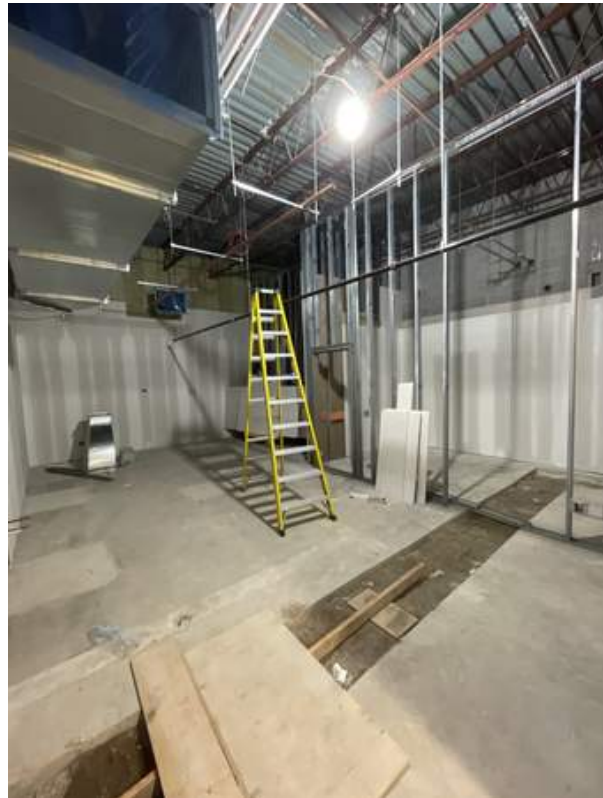


**ICS Weekly Project Report**  
July 18, 2022



ISD #465 Litchfield Public Schools  
2019 Referendum

**Lake Ripley – Flex and Special Education Wall Framing and Mechanical/Electrical  
Rough In**





A LEONCE Company

## ICS Weekly Project Report

July 18, 2022



ISD #465 Litchfield Public Schools

2019 Referendum

### Lake Ripley Roof Progress







**ICS Weekly Project Report**  
July 18, 2022



ISD #465 Litchfield Public Schools  
2019 Referendum

**High School – CTE, Weights, and Cardio – Overhead mechanical and electrical rough-in. Masonry wall construction on-going.**



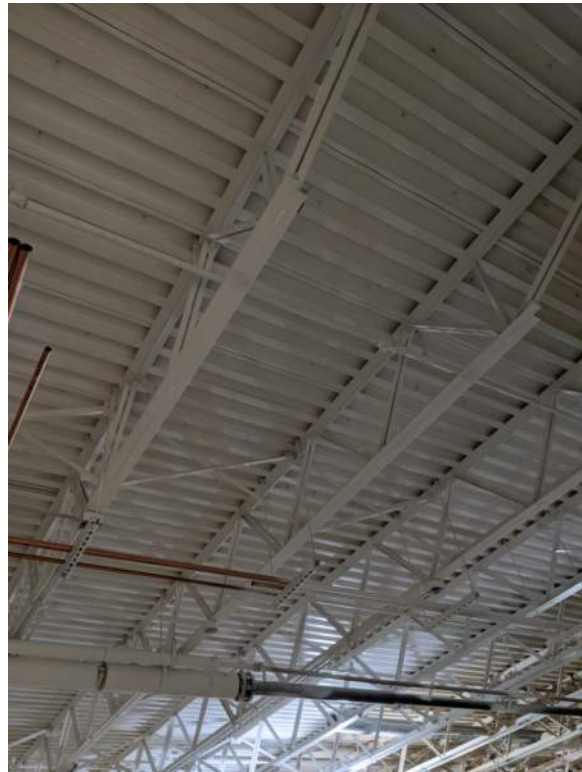


**ICS Weekly Project Report**  
July 18, 2022



ISD #465 Litchfield Public Schools  
2019 Referendum

**High School – CTE, Weights, and Cardio – Slab demolition and ceiling structure painted finish.**





# ICS Weekly Project Report

July 18, 2022



ISD #465 Litchfield Public Schools  
2019 Referendum

## **High School – Media Center & Classrooms – Wall framing and in-wall electrical rough-in. Mechanical insulation progress.**







**ICS Weekly Project Report**  
July 18, 2022



ISD #465 Litchfield Public Schools  
2019 Referendum



**High/Middle School – Site Improvements- Underground rate control filtration system perforated chambers delivered**



	<p align="center"><b>ICS Weekly Project Report</b> July 25, 2022</p>
	<p align="center">ISD #465 Litchfield Public Schools 2019 Referendum</p>



### **Lake Ripley Elementary Interior Renovations**

- **Completed Week ending Friday, July 22, 2022**
  - Boiler Room
    - Continued new equipment piping and connections
  - Classrooms
    - Finished casework installation
    - Continued ceiling installation in northwest classrooms
    - Drywall, tape and mudded walls in of Special Education, Art, and Flex Rooms
    - Mechanical and electrical rough in of Special Education, Art, and Flex Rooms
  - Bathrooms
    - Finished wall framing
    - Continue low voltage, electrical and mechanical rough ins
  - Roof work
    - Metal panel roofing and gutters
  
- **Planned for Week ending Friday, July 29, 2022**
  - Boiler Room
    - Continue new equipment piping and connections
  - Classrooms
    - Remove floor protection, wax, and clean northwest classrooms
    - Paint
    - Mechanical and electrical rough ins for Special Education, Art, and Flex Room
    - Pour back concrete floors in Special Education
  - Bathrooms
    - Drywall, tape, and mud walls
  - Roof work
    - Continue metal roofing and gutters

	<p align="center"><b>ICS Weekly Project Report</b> July 25, 2022</p>
	<p align="center">ISD #465 Litchfield Public Schools 2019 Referendum</p>

### **Middle School/High School Interior Renovations**

- **Completed Week ending Friday, July 22, 2022**
  - High School – CTE, Weights, and Cardio
    - Continued masonry walls.
    - Continued overhead mechanical and electrical rough-in.
    - Completed roofing demo, steel and roof patching at new mechanical equipment locations.
    - Completed wall framing and sheathing at the Spray Booth.
  - High School – Classrooms and Media Center
    - Completed metal stud wall framing.
    - Continued in-wall electrical rough-in.
    - Continued acoustical ceiling grid.
  - High School – Corridors
    - Continued mechanical insulation.
- **Planned for Week ending Friday, July 29, 2022**
  - High School – CTE, Weights, and Cardio
    - Continue masonry walls.
    - Continue mechanical and electrical rough-in.
    - Complete lintels and masonry at exterior openings.
    - Continue painting walls and structure above.
  - High School – Classrooms and Media Center
    - Continue acoustical ceiling grid.
    - Begin setting lights and diffusers in the ceiling grid.
  - High School – Corridors
    - Complete mechanical insulation.

	<p><b>ICS Weekly Project Report</b> July 25, 2022</p>
	<p>ISD #465 Litchfield Public Schools 2019 Referendum</p>

**Middle/High School Parking Lot**

- **Completed for Week ending Friday, July 22, 2022**
  - Stake and layouts for concrete curbs
- **Planned for Week ending Friday, July 29, 2022**
  - Excavation, install underground filtration system
  - Connect filtration system to underground storm system
  - Excavate for electrical line for future electronic monument sign



# ICS Weekly Project Report

July 25, 2022



ISD #465 Litchfield Public Schools  
2019 Referendum

## Lake Ripley – Special Education Suite-Drywall and Mechanical Rough In







## ICS Weekly Project Report

July 25, 2022



ISD #465 Litchfield Public Schools  
2019 Referendum

### Lake Ripley – Classrooms Ceiling Installation





# ICS Weekly Project Report

July 25, 2022



ISD #465 Litchfield Public Schools  
2019 Referendum

## High School – CTE, Weights, and Cardio – Welding booth exhaust arms. Paint spray booth enclosure.





**ICS Weekly Project Report**  
July 25, 2022



ISD #465 Litchfield Public Schools  
2019 Referendum

**High School – CTE, Weights, and Cardio – Roof demo, roof curbs and patching at new and removed mechanical unit locations.**





ICS Weekly Project Report  
July 25, 2022



ISD #465 Litchfield Public Schools  
2019 Referendum

**High School – Classrooms – Acoustical ceiling grid installation on-going. Underground plumbing in the FACS classroom.**

