


	<p align="center">ICS Weekly Project Report July 5, 2021</p>
	<p align="center">ISD #465 Litchfield Public Schools 2019 Referendum</p>

District Wide

- **Completed Week ending Friday, July 2, 2021**
 - POC meeting occurred 06/30/21

Lake Ripley Elementary

- **Completed Week ending Friday, July 2, 2021**
 - Interior renovations Summer 2021/2022 work
 - Taped, mud, and sand drywall in classrooms
 - Started prep work for painting in classrooms
 - Continued mechanical and electrical rough ins in corridors
 - Poured back concrete in bathrooms
 - Drywall and start taping, mudding, and sanding in Special Education Suite
 - Installed underground plumbing in new staff lounge/old cafeteria
 - Removed HVAC units out of mezzanine level
 - Wall framed offices and classrooms adjacent to Media Center
- **Planned for Week ending Friday, July 9, 2021**
 - Interior renovations Summer 2021/2022 work
 - Start wall framing in bathrooms
 - Install plumbing in walls at large bathrooms
 - Continue mechanical and electrical rough ins in corridors
 - Start painting in classrooms
 - Finish above ceiling mechanical and electrical rough ins in classrooms
 - Finish drywall and start taping, mudding, and sanding in Special Education Suite
 - Frame walls and install ductwork in old cafeteria/new staff area
 - Continue demolition in mezzanine level
 - Rough in mechanical and electrical for new air handling units in mezzanine level
 - Frame walls and soffits for media center and adjacent rooms
 - Install steel for glass partitions in media center and adjacent rooms

	<p align="center">ICS Weekly Project Report July 5, 2021</p>
	<p align="center">ISD #465 Litchfield Public Schools 2019 Referendum</p>

Middle School/High School

- **Completed Week/ ending Friday, July 2, 2021**
 - Middle School
 - Began structural steel erection in Special Ed. area.
 - Continued framing metal stud partitions.
 - Continued underground plumbing and concrete infills.
 - Continued above ceiling mechanical and electrical rough-in.
 - High School
 - Began forming concrete footing and column piers in the Commons.
 - Continued shoring, masonry wall demolition and concrete slab removal in the Commons.
 - Began framing metal stud partitions in the Admin area.
 - Continued above ceiling plumbing, mechanical and electrical rough-in.
- **Planned for Week ending Friday, July 9, 2021**
 - Middle School
 - Continue structural steel erection.
 - Continue framing metal stud partitions.
 - Complete all underground plumbing and concrete infills.
 - Continue above ceiling mechanical and electrical rough-in.
 - High School
 - Complete masonry wall demolition and concrete slab removal in the Commons.
 - Begin structural steel erection in the Commons.
 - Continue framing metal stud partitions.
 - Continue above ceiling mechanical and electrical rough-in.
 - Continue underground plumbing and concrete infills.



ICS Weekly Project Report
July 5, 2021



ISD #465 Litchfield Public Schools
2019 Referendum

Lake Ripley – Old Cafeteria/New Staff Area Concrete Floor Poured Back In





ICS Weekly Project Report
July 5, 2021



ISD #465 Litchfield Public Schools
2019 Referendum

Lake Ripley – Mezzanine Level Air Handling Unit Removal and Demolition





ICS Weekly Project Report
July 5, 2021



ISD #465 Litchfield Public Schools
2019 Referendum

**Lake Ripley – Large Bathroom -Underground Plumbing-Vapor Barrier Installation
Prior to Concrete Floor Pour Back**





ICS Weekly Project Report
July 5, 2021



ISD #465 Litchfield Public Schools
2019 Referendum

Lake Ripley – Special Education Suite Drywall/Tape/Mud



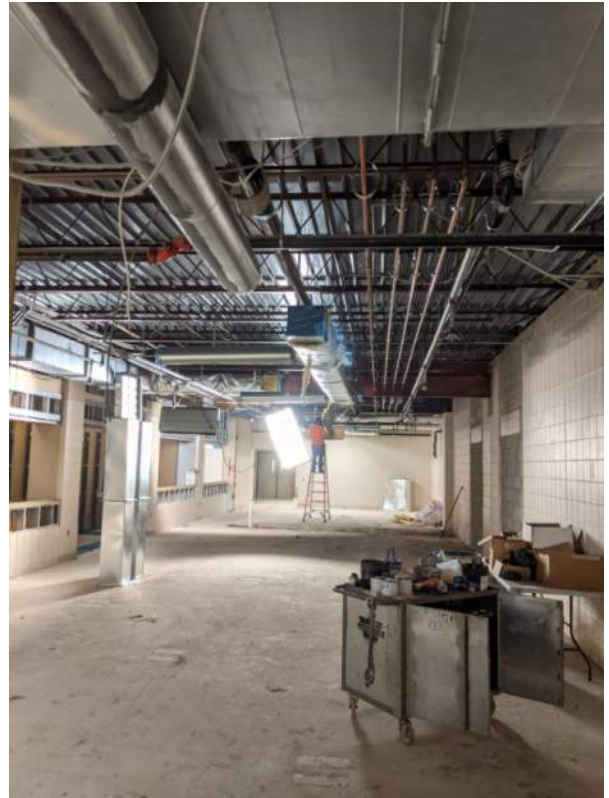


ICS Weekly Project Report
July 5, 2021



ISD #465 Litchfield Public Schools
2019 Referendum

**Middle School – Metal stud partitions and above ceiling mechanical rough-in in the
Special Ed. areas.**



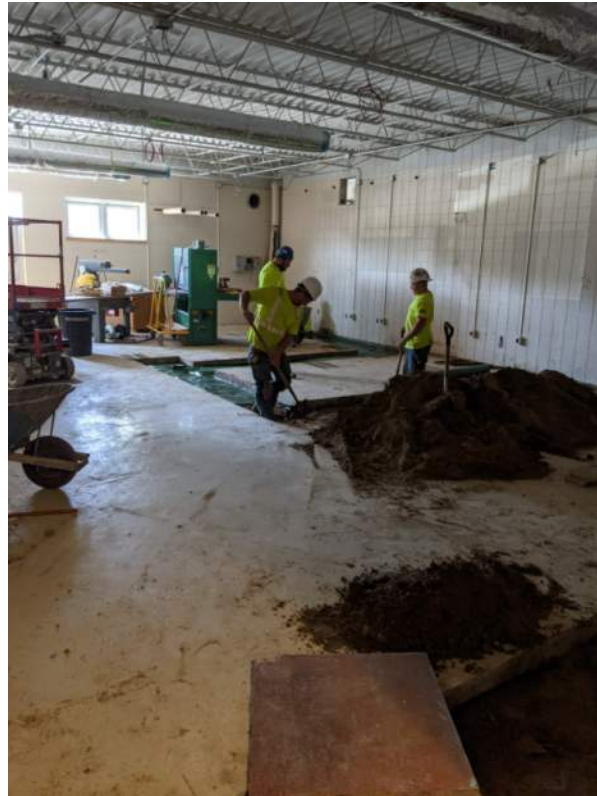


ICS Weekly Project Report
July 5, 2021



ISD #465 Litchfield Public Schools
2019 Referendum

Middle School – Backfilling underground plumbing trenches in the Art and Steam areas.





ICS Weekly Project Report
July 5, 2021



ISD #465 Litchfield Public Schools
2019 Referendum

High School – Commons footings/column pier form work and shoring for masonry wall demo.







ICS Weekly Project Report
July 5, 2021



ISD #465 Litchfield Public Schools
2019 Referendum

High School – Footings/column piers in the Special Ed. area and metal stud partitons in the Admin. Area.





	<p align="center">ICS Weekly Project Report July 12, 2021</p>
	<p align="center">ISD #465 Litchfield Public Schools 2019 Referendum</p>

District Wide

- **Planned for Week ending Friday, July 16, 2021**
 - POC meeting scheduled for 07/14/21

Lake Ripley Elementary

- **Completed Week ending Friday, July 9, 2021**
 - Interior renovations Summer 2021/2022 work
 - Installed plumbing in large bathrooms
 - Continued mechanical and electrical rough ins in corridors
 - Started painting in classrooms
 - Finished above ceiling mechanical and electrical rough ins in classrooms
 - Finished drywall and start taping, mudding, sanding in Special Ed. Suite
 - Continued demolition in mezzanine level
 - Roughed in mechanical and electrical for new air handling units in mezzanine l
 - Framed walls and soffits for media center and adjacent rooms
 - Installed steel for glass partitions in media center and adjacent rooms
- **Planned for Week ending Friday, July 16, 2021**
 - Interior renovations Summer 2021/2022 work
 - Wall framing and drywall in bathrooms
 - HVAC ductwork removal and new installation in bathrooms
 - Electrical rough ins for bathrooms
 - Frame walls and install ductwork in old cafeteria/new staff area
 - Mechanical and electrical work in old cafeteria/new staff area
 - Start painting in old administration/new special education suite
 - Start ceiling grid in classrooms
 - Continue painting in classrooms
 - Placing diffusers and light fixtures in classrooms
 - Finish demolition in mezzanine level
 - Continue mechanical and electrical rough ins on mezzanine level
 - Install masonry and structural steel lintels for mezzanine opening
 - Media Center, STEAM, Speech classroom offices drywall

	<p align="center">ICS Weekly Project Report July 12, 2021</p>
	<p align="center">ISD #465 Litchfield Public Schools 2019 Referendum</p>

Middle School/High School

- **Completed Week/ ending Friday, July 9, 2021**
 - Middle School
 - Completed structural steel erection.
 - Continued framing metal stud partitions.
 - Completed all underground plumbing.
 - Continued above ceiling mechanical and electrical rough-in.
 - Began painting in the corridors.
 - High School
 - Continued structural steel erection.
 - Completed masonry wall demolition and concrete slab removal in the Commons.
 - Continued framing metal stud partitions.
 - Continued above ceiling mechanical and electrical rough-in.
 - Continued underground plumbing and concrete infills.
- **Planned for Week ending Friday, July 16, 2021**
 - Middle School
 - Complete remaining concrete infills at underground plumbing trenches.
 - Continue in-wall plumbing and electrical rough-in.
 - Continue framing metal stud partitions.
 - Continue insulating plumbing and mechanical lines.
 - Continue painting.
 - Begin acoustical ceiling grid installation.
 - Begin hanging drywall.
 - High School
 - Begin structural steel erection in the Commons.
 - Continue soil removal and grading in the commons.
 - Continue in-wall plumbing and electrical rough-in.
 - Continue framing metal stud partitions and begin hanging drywall.
 - Continue insulating plumbing and mechanical lines.



ICS Weekly Project Report
July 12, 2021



ISD #465 Litchfield Public Schools
2019 Referendum

Lake Ripley – Classroom Painting and Ceiling Grid





ICS Weekly Project Report
July 12, 2021



ISD #465 Litchfield Public Schools
2019 Referendum

Lake Ripley – Media Center and STEAM Classroom Structural Steel





ICS Weekly Project Report
July 12, 2021



ISD #465 Litchfield Public Schools
2019 Referendum

Lake Ripley – Bathroom Plumbing and Piping



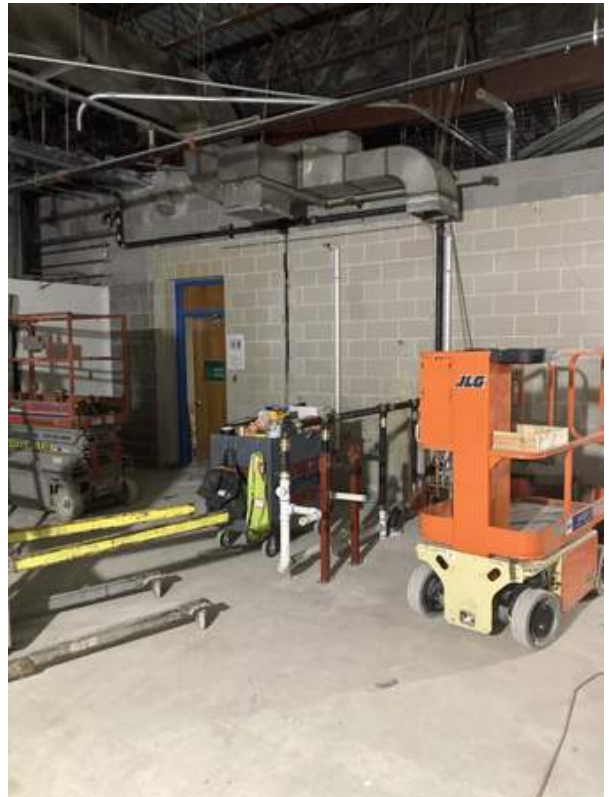


ICS Weekly Project Report
July 12, 2021



ISD #465 Litchfield Public Schools
2019 Referendum

Lake Ripley – Old Cafeteria/New Staff Lounge/Restroom



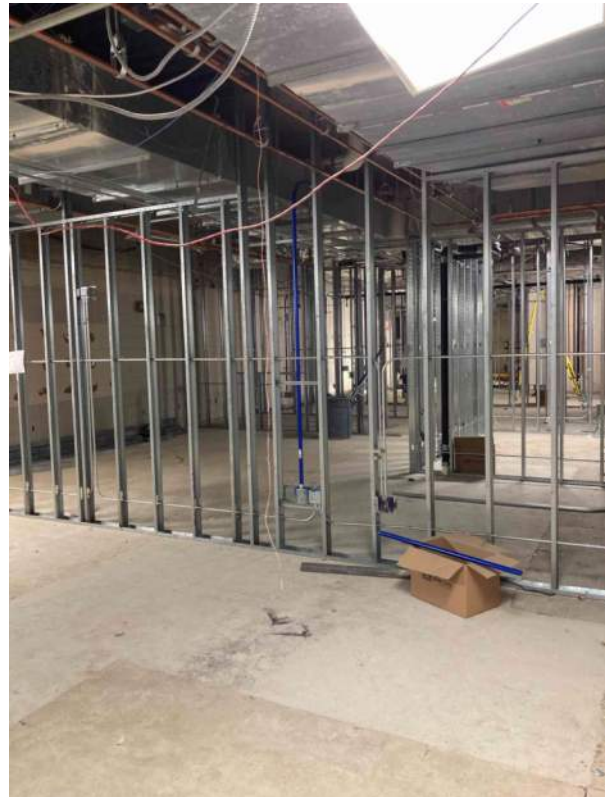


ICS Weekly Project Report
July 12, 2021



ISD #465 Litchfield Public Schools
2019 Referendum

Middle School – SPED area wall framing and in-wall electrical rough-in.



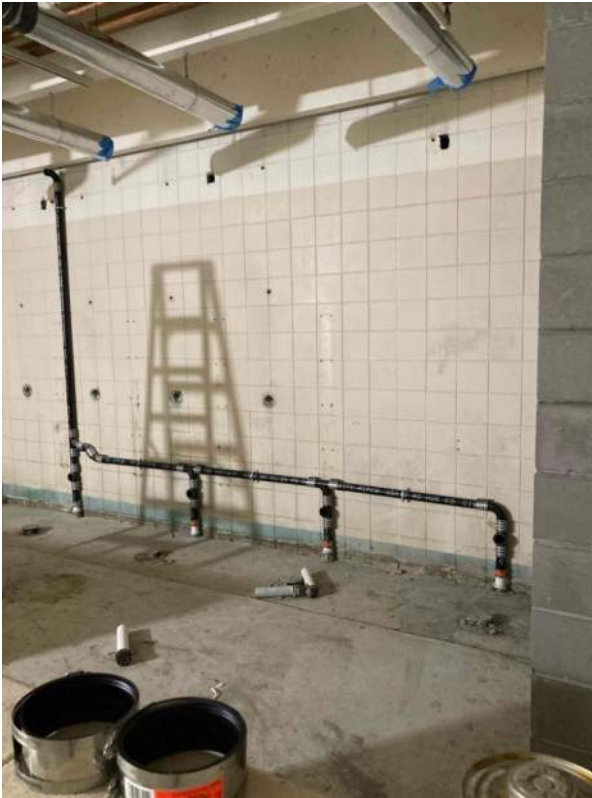


ICS Weekly Project Report
July 12, 2021



ISD #465 Litchfield Public Schools
2019 Referendum

Middle School – Locker Room concrete infill at completed underground plumbing and vent piping. FACSs area underground plumbing rough-in.





ICS Weekly Project Report
July 12, 2021



ISD #465 Litchfield Public Schools
2019 Referendum

High School – Commons area concrete footings/column piers.







ICS Weekly Project Report
July 12, 2021



ISD #465 Litchfield Public Schools
2019 Referendum

High School – Admin. and SPED area metal stud partitions and door frames.





	<p align="center">ICS Weekly Project Report July 19, 2021</p>
	<p align="center">ISD #465 Litchfield Public Schools 2019 Referendum</p>

District Wide

- **Completed Week ending Friday, July 16, 2021**
 - POC meeting held on 07/14/21
- **Planned for Week ending Friday, July 23, 2021**
 - POC meeting scheduled for 07/21/21

Lake Ripley Elementary

- **Completed Week ending Friday, July 16, 2021**
 - Interior renovations Summer 2021/2022 work
 - Wall framing and drywall in bathrooms
 - HVAC ductwork removal and new installation in bathrooms
 - Electrical rough ins for bathrooms
 - Mechanical and electrical work in old cafeteria/new staff area
 - Started ceiling grid in classrooms
 - Continued painting in classrooms
 - Placed diffusers and light fixtures in classrooms
 - Continued demolition in mezzanine level
 - Continued mechanical and electrical rough ins on mezzanine level
 - Installed masonry and structural steel lintels for mezzanine opening
 - Media Center, STEAM, Speech classroom offices drywall
 -
- **Planned for Week ending Friday, July 23, 2021**
 - Interior renovations Summer 2021/2022 work
 - Frame walls and install ductwork in old cafeteria/new staff area
 - Start painting in old administration/new special education suite
 - Finish demolition in mezzanine level
 - Continued mechanical and electrical rough ins on mezzanine level
 - Roof penetrations in mezzanine level for HVAC ductwork and equipment
 - Start tiling bathrooms
 - Start painting in offices
 - Continue ceiling grid in classrooms
 - Install light fixtures and diffusers in classrooms

	<p align="center">ICS Weekly Project Report July 19, 2021</p>
	<p align="center">ISD #465 Litchfield Public Schools 2019 Referendum</p>

Middle School/High School

- **Completed Week/ ending Friday, July 16, 2021**
 - Middle School
 - Completed remaining concrete infills at underground plumbing trenches.
 - Continued framing metal stud partitions.
 - Continued in-wall plumbing and electrical rough-in.
 - Continued insulating plumbing and mechanical lines.
 - Continued painting.
 - Began acoustical ceiling grid installation in the corridors.
 - Began hanging drywall.
 - High School
 - Began structural steel erection in the Commons.
 - Continued earthwork and grading in the commons.
 - Continued framing metal stud partitions.
 - Continued in-wall plumbing and electrical rough-in.
 - Continued insulating plumbing and mechanical lines.
- **Planned for Week ending Friday, July 23, 2021**
 - Middle School
 - Complete all masonry and metal stud partitions.
 - Continue in-wall plumbing and electrical rough-in.
 - Continue insulating plumbing and mechanical lines.
 - Continue painting.
 - Continue acoustical ceiling grid installation.
 - High School
 - Continue structural steel erection in the Commons.
 - Begin structural steel erection in the Admin. area.
 - Complete earthwork and grading in the commons.
 - Continue framing metal stud partitions and begin hanging drywall.
 - Continued in-wall plumbing and electrical rough-in.
 - Continued insulating plumbing and mechanical lines.



ICS Weekly Project Report
July 19, 2021



ISD #465 Litchfield Public Schools
2019 Referendum

Lake Ripley – Bathroom Wall Framing and Drywall





ICS Weekly Project Report
July 19, 2021



ISD #465 Litchfield Public Schools
2019 Referendum

Lake Ripley – Classroom Ceiling Grid, Light Fixtures, and Painting Completion





ICS Weekly Project Report
July 19, 2021



ISD #465 Litchfield Public Schools
2019 Referendum

Lake Ripley – Mezzanine HVAC Removal and Roof Penetrations





ICS Weekly Project Report
July 19, 2021



ISD #465 Litchfield Public Schools
2019 Referendum

Lake Ripley – Old Administration/New Special Education Suite





ICS Weekly Project Report
July 19, 2021



ISD #465 Litchfield Public Schools
2019 Referendum

Lake Ripley – Media Center and STEAM Classroom Wall Framing and Drywall





ICS Weekly Project Report
July 19, 2021



ISD #465 Litchfield Public Schools
2019 Referendum

Middle School – Special Ed. metal stud partitions and in-wall electrical rough-in.





ICS Weekly Project Report
July 19, 2021



ISD #465 Litchfield Public Schools
2019 Referendum

Middle School – Locker Room areas plumbing in-progress and metal stud framing complete. FACSS area underground plumbing rough-in and concrete infills completed.



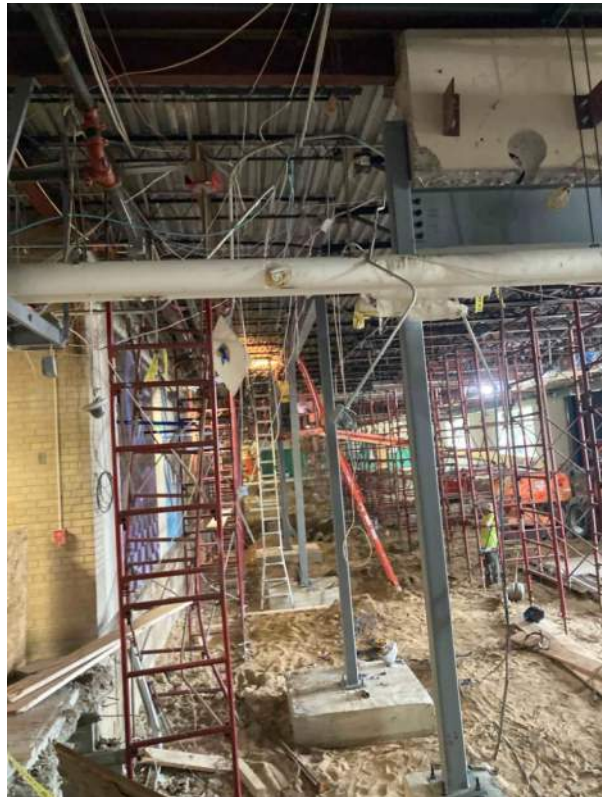


ICS Weekly Project Report
July 19, 2021



ISD #465 Litchfield Public Schools
2019 Referendum

High School – Commons area concrete footings/column piers.







ICS Weekly Project Report
July 19, 2021



ISD #465 Litchfield Public Schools
2019 Referendum

High School – Admin. and SPED area metal stud partitions and door frames.





	<p align="center">ICS Weekly Project Report July 26, 2021</p>
	<p align="center">ISD #465 Litchfield Public Schools 2019 Referendum</p>

District Wide

- **Completed Week ending Friday, July 23, 2021**
 - POC meeting held on 07/21/21
- **Planned for Week ending Friday, July 30, 2021**

Lake Ripley Elementary

- **Completed Week ending Friday, July 23, 2021**
 - Interior renovations Summer 2021/2022 work
 - Mechanical and electrical work in old cafeteria/new staff area
 - Continued ceiling grid in classrooms and corridors
 - Continued painting in classrooms, started painting in new special education
 - Continued diffusers and light fixtures in classrooms
 - Continued mechanical and electrical rough ins on mezzanine level
 - Finished demolition in mezzanine level
 - Roof penetrations in mezzanine level for HVAC ductwork and equipment
 - Media Center, STEAM, Speech classroom offices drywall
 - Tiled bathrooms
- **Planned for Week ending Friday, July 30, 2021**
 - Interior renovations Summer 2021/2022 work
 - Continue sprinkler work, ceiling grid, light fixtures, and diffusers in corridors
 - Sprinkler work, and pad out classroom ceilings
 - Media Center, STEAM, Speech classroom offices drywall
 - Installation of ceiling grid, light fixtures, toilets, and sprinkler work in bathrooms
 - Paint walls, door frames in special education suite
 - Install ceiling grid, sprinkler work, diffusers and lights in special education suite
 - Frame walls in staff collaboration space
 - Continue mechanical and electrical rough ins for staff collaboration space
 - Start installing new mechanical units on mezzanine level
 - Gymnasium duct removal
 - Joist pockets in gymnasium and old cafeteria for steel joists

	<p align="center">ICS Weekly Project Report July 26, 2021</p>
	<p align="center">ISD #465 Litchfield Public Schools 2019 Referendum</p>

Middle School/High School

- **Completed Week/ ending Friday, July 23, 2021**
 - Middle School
 - Completed all masonry and metal stud partitions.
 - Continued in-wall plumbing and electrical rough-in.
 - Continued insulating plumbing and mechanical lines.
 - Continued acoustical ceiling grid installation.
 - Continued drywall hanging and taping.
 - Continued painting.
 - Started creating roof openings for new mechanical equipment.
 - High School
 - Continued structural steel erection in the Commons.
 - Begin structural steel erection in the Admin. area.
 - Complete earthwork and grading in the commons.
 - Continue framing metal stud partitions and begin hanging drywall.
 - Continued in-wall plumbing and electrical rough-in.
 - Continued insulating plumbing and mechanical lines.
 - Started creating roof openings for new mechanical equipment.

- **Planned for Week ending Friday, July 30, 2021**
 - Middle School
 - Continue in-wall plumbing and electrical rough-in.
 - Continue insulating plumbing and mechanical lines.
 - Continue drywall hanging and taping, begin sanding drywall.
 - Continue painting.
 - Continue acoustical ceiling grid installation.
 - Begin tile work in the Locker Room areas.
 - High School
 - Complete all remaining slab infills.



ICS Weekly Project Report

July 26, 2021



ISD #465 Litchfield Public Schools
2019 Referendum

- Begin concrete formwork and rebar for the Commons area slabs, ramps and stairs.
- Continue in-wall plumbing and electrical rough-in in the Admin. and Special Ed. spaces.
- Continue metal stud framing and in-wall plumbing and electrical rough-in.
- Continue insulating plumbing and mechanical lines.
- Continue hanging and taping drywall.



ICS Weekly Project Report
July 26, 2021



ISD #465 Litchfield Public Schools
2019 Referendum

Lake Ripley – Staff Collaboration Space





ICS Weekly Project Report
July 26, 2021



ISD #465 Litchfield Public Schools
2019 Referendum

Lake Ripley – Bathroom Tile Work





ICS Weekly Project Report
July 26, 2021



ISD #465 Litchfield Public Schools
2019 Referendum

Lake Ripley – Mezzanine Level Mechanical Units Staged



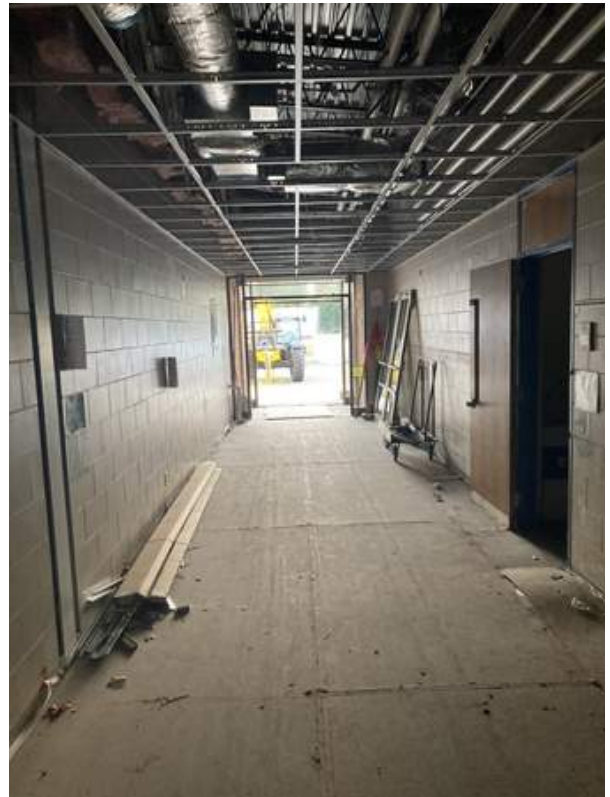


ICS Weekly Project Report
July 26, 2021



ISD #465 Litchfield Public Schools
2019 Referendum

Lake Ripley – Corridor Ceiling Grid





ICS Weekly Project Report
July 26, 2021



ISD #465 Litchfield Public Schools
2019 Referendum

Lake Ripley – Classroom Ceiling and Light Fixtures





ICS Weekly Project Report
July 26, 2021



ISD #465 Litchfield Public Schools
2019 Referendum

Middle School – FACS Lab framing and in-wall rough-in complete. Art Room masonry and metal stud wall framing complete.





ICS Weekly Project Report
July 26, 2021



ISD #465 Litchfield Public Schools
2019 Referendum

Middle School – Special Ed. drywall hanging and taping progress. Corridor painting and acoustical ceiling grid installation progress.



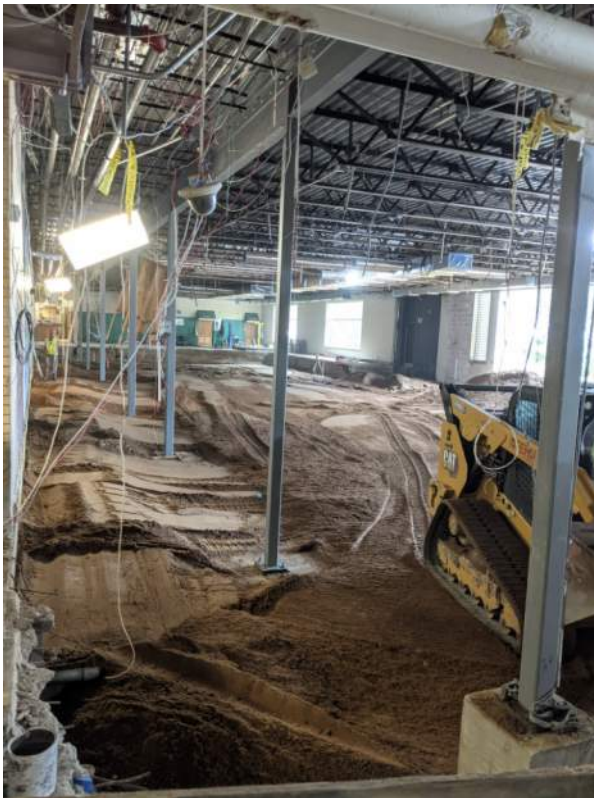


ICS Weekly Project Report
July 26, 2021



ISD #465 Litchfield Public Schools
2019 Referendum

High School – Structural steel nearing completion, shoring removed and earthwork in-progress.





ICS Weekly Project Report
July 26, 2021



ISD #465 Litchfield Public Schools
2019 Referendum

High School – Admin. offices framing and in-wall electrical rough-in progress. Special Ed. suite wall/soffit framing and in-wall rough-in progress.

