


	<p align="center">ICS Weekly Project Report June 1, 2021</p>
	<p align="center">ISD #465 Litchfield Public Schools 2019 Referendum</p>

District Wide

- **Completed for Week ending Friday, May 28, 2021**
 - Groundbreaking/Ribbon Cutting coordination
- **Planned for Week ending Friday, June 4, 2021**
 - POC meeting scheduled for 06/02/21

Lake Ripley Elementary

- **Completed Week/ ending Friday, May 28, 2021**
 - Kitchen/Cafeteria Addition
 - Continued punch list
 - Continued testing, balancing, commissioning of mechanical system and kitchen equipment
 - Exterior sod work
 - Exterior roof work
 - Anchored shed down to concrete
 - Interior renovations Summer 2021/2022 work
 - Demolition of Media Center
 - Abatement in Media Center
 - Disconnect mechanical air handling units in mezzanine level
- **Planned for Week ending Friday, June 4, 2021**
 - Kitchen/Cafeteria Addition
 - Continue punch list
 - Continue testing, balancing, commissioning of mechanical system and kitchen equipment
 - Interior renovations Summer 2021/2022 work
 - Install floor covering/protection in hallways
 - Remove corridor ceilings
 - Start removal of casework and ceilings in classrooms
 - Removal and demolition of mechanical units in mezzanine level
 - Demolition in old kitchen
 - Continue demolition in Media Center

	<p style="text-align: center;">ICS Weekly Project Report June 1, 2021</p>
	<p style="text-align: center;">ISD #465 Litchfield Public Schools 2019 Referendum</p>

Middle School/High School

- **Completed Week ending Friday, May 28, 2021**
 - District staff continued packing and moving out of spaces in preparation of construction commencing.
 - ICS/Wold Continued receiving and reviewing material submittals.
 - Middle School
 - Continued demolition in the Media areas and Staff Lounge.
 - High School
 - Continued demolition in the: Media Center, Computer Lab and Auditorium.
- **Planned for Week ending Friday, June 4, 2021**
 - Owner to continue packing and moving out of spaces in preparation of construction commencing.
 - Contractor to begin installing floor protection and temporary construction partitions.
 - Middle School
 - Continue demolition in the existing Media and Special Ed. areas.
 - High School
 - Continue demolition in the existing Auditorium.
 - Continue demolition in the existing Media and Special Ed. Areas.



ICS Weekly Project Report
June 1, 2021



ISD #465 Litchfield Public Schools
2019 Referendum

Lake Ripley – Kitchen Addition – Exterior Sod





ICS Weekly Project Report

June 1, 2021



ISD #465 Litchfield Public Schools
2019 Referendum

Lake Ripley – Demolition of Media Center





ICS Weekly Project Report
June 1, 2021



ISD #465 Litchfield Public Schools
2019 Referendum

Middle School – Demolition progress in the Media and Staff Lounge areas.



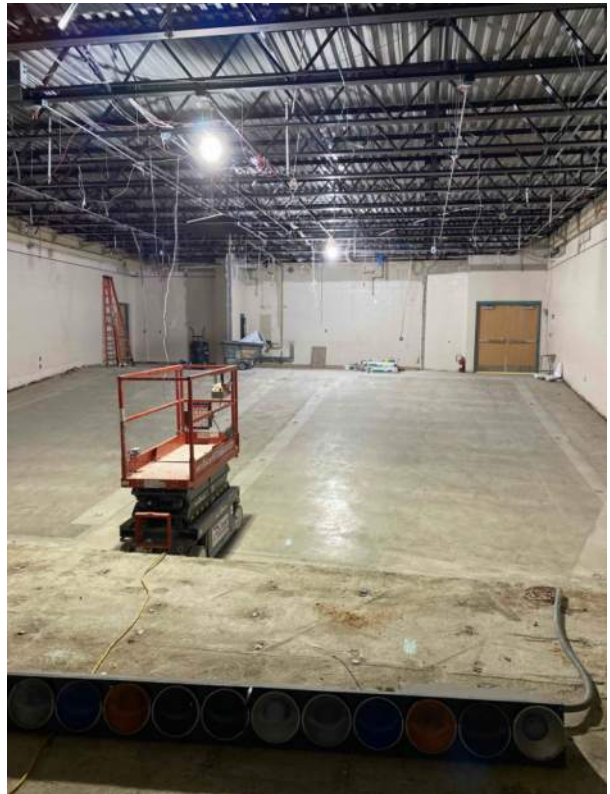


ICS Weekly Project Report
June 1, 2021



ISD #465 Litchfield Public Schools
2019 Referendum

High School – Auditorium demolition progress.







ICS Weekly Project Report
June 1, 2021



ISD #465 Litchfield Public Schools
2019 Referendum

High School – Demolition progress in the Media Center.





	<p align="center">ICS Weekly Project Report June 7, 2021</p>
	<p align="center">ISD #465 Litchfield Public Schools 2019 Referendum</p>

District Wide

- **Completed for Week ending Friday, June 4, 2021**
 - POC meeting held on 06/02/21
- **Planned for Week ending Friday, June 11, 2021**
 - Coordination for Ground Breaking/Ribbon Cutting Ceremonies

Lake Ripley Elementary

- **Completed Week/ ending Friday, June 4, 2021**
 - Kitchen/Cafeteria Addition
 - Continued punch list
 - Interior renovations Summer 2021/2022 work
 - Installed floor covering/protection in hallways
 - Removed corridor ceilings
 - Started removal of casework and ceilings in classrooms
 - Removal and demolition of mechanical units in mezzanine level
 - Demolition in old kitchen
 - Continued demolition in Media Center
 - Installed ductwork in new Special Education Suite
 - Installed ductwork in Media Center
- **Planned for Week ending Friday, June 11, 2021**
 - Kitchen/Cafeteria Addition
 - Continue punch list
 - Interior renovations Summer 2021/2022 work
 - Continue ductwork HVAC installation
 - Continue removal of casework and ceilings in classrooms
 - Continue removal and demolition of mechanical units in mezzanine level
 - Demolition in old kitchen
 - Continue demolition in Media Center
 - Abatement in corridor ceilings

	<p align="center">ICS Weekly Project Report June 7, 2021</p>
	<p align="center">ISD #465 Litchfield Public Schools 2019 Referendum</p>

Middle School/High School

- **Completed Week ending Friday, June 4, 2021**
 - Completed the installation of floor protection and temporary walls.
 - ICS/Wold Continued receiving and reviewing material submittals.
 - Continued corridor ceiling demolition throughout the MS and HS.
 - Middle School
 - Continued demolition in the Media areas and Staff Lounge.
 - Installed temporary shoring in the new Special Ed. Suite
 - High School
 - Continued demolition in the existing Auditorium & Cafeteria (New Commons Area).
 - Began installing new ductwork in the Commons Area.
- **Planned for Week ending Friday, June 11, 2021**
 - Install temporary site fencing for construction access and staging areas.
 - Middle School
 - Begin concrete saw cutting and slab removal for underground plumbing demo and rough-in.
 - Begin demolition in the existing Wood Shop and STEM areas.
 - High School
 - Continue demolition in the existing Auditorium / New Commons Area.
 - Resume demolition in the Special Ed. And Resource areas



ICS Weekly Project Report
June 7, 2021



ISD #465 Litchfield Public Schools
2019 Referendum

Lake Ripley – Corridor Ceiling Removal and Demolition





ICS Weekly Project Report
June 7, 2021



ISD #465 Litchfield Public Schools
2019 Referendum

Lake Ripley – Media Center Ductwork Installation





ICS Weekly Project Report
June 7, 2021



ISD #465 Litchfield Public Schools
2019 Referendum

Lake Ripley – Special Education Suite Ductwork Installation





ICS Weekly Project Report
June 7, 2021



ISD #465 Litchfield Public Schools
2019 Referendum

Middle School – Special Ed. Suite demolition progress and temporary shoring installed.





ICS Weekly Project Report
June 7, 2021



ISD #465 Litchfield Public Schools
2019 Referendum

High School – Floor protection installed.







ICS Weekly Project Report
June 7, 2021



ISD #465 Litchfield Public Schools
2019 Referendum

High School – Demolition progress in the existing Cafeteria.





	<p align="center">ICS Weekly Project Report June 14, 2021</p>
	<p align="center">ISD #465 Litchfield Public Schools 2019 Referendum</p>

District Wide

- **Completed for Week ending Friday, June 11, 2021**
 - Coordination for Groundbreaking/Ribbon Cutting Ceremonies
- **Planned for Week ending Friday, June 18, 2021**
 - Groundbreaking/Ribbon Cutting Ceremony to be held 06/14/21
 - POC meeting scheduled for 06/16/21

Lake Ripley Elementary

- **Completed Week/ ending Friday, June 11, 2021**
 - Kitchen/Cafeteria Addition
 - Continued punch list
 - Interior renovations Summer 2021/2022 work
 - Continued ductwork HVAC installation
 - Continued removal of casework and ceilings in classrooms
 - Continued removal and demolition of mechanical units in mezzanine level
 - Demolition in old kitchen
 - Demolition in large restrooms
 - Continued demolition in Media Center
 - Abatement in corridor ceilings
- **Planned for Week ending Friday, June 18, 2021**
 - Kitchen/Cafeteria Addition
 - Continue punch list
 - Interior renovations Summer 2021/2022 work
 - Continue ductwork HVAC installation
 - Continue removal of casework and ceilings in classrooms
 - Continue framing walls in Special Education Suite
 - Start installing plywood backing in classrooms
 - Take apart cooler and freezer
 - Hydronic piping and plumbing rough in installation in classrooms

	<p align="center">ICS Weekly Project Report June 14, 2021</p>
	<p align="center">ISD #465 Litchfield Public Schools 2019 Referendum</p>

Middle School/High School

- **Completed Week ending Friday, June 11, 2021**
 - Continued receiving and reviewing material submittals.
 - ICS and the District met with various vendors to define technology and security scopes.
 - Middle School
 - Continued masonry wall demolition in existing Administration, Media Center and Special Ed. Areas.
 - Demolished plumbing/mechanical piping and duct work throughout.
 - High School
 - Continued demolition of concrete slabs and masonry walls in the existing Auditorium/future Commons.
 - Continued masonry wall demolition in existing Media Center and Special Ed. Areas.
- **Planned for Week ending Friday, June 18, 2021**
 - Middle School
 - Continue acoustical ceiling demolition throughout.
 - Continue plumbing and mechanical piping demolition throughout.
 - Begin saw-cutting and slab removals in the future Special Ed. Suite and FACS.
 - Begin framing metal stud walls in the future Special Ed. Suite and FACS.
 - Begin mechanical and electrical rough-in in the future Special Ed. Suite and FACS.
 - High School
 - Continue demolition of concrete slabs and masonry walls in the existing Auditorium/future Commons.
 - Resume structural shoring in the existing Auditorium/future Commons.
 - Continue acoustical ceiling demolition throughout.
 - Continue plumbing and mechanical piping demolition throughout.
 - Begin mechanical and electrical rough-in in the future Special Ed. Suite.



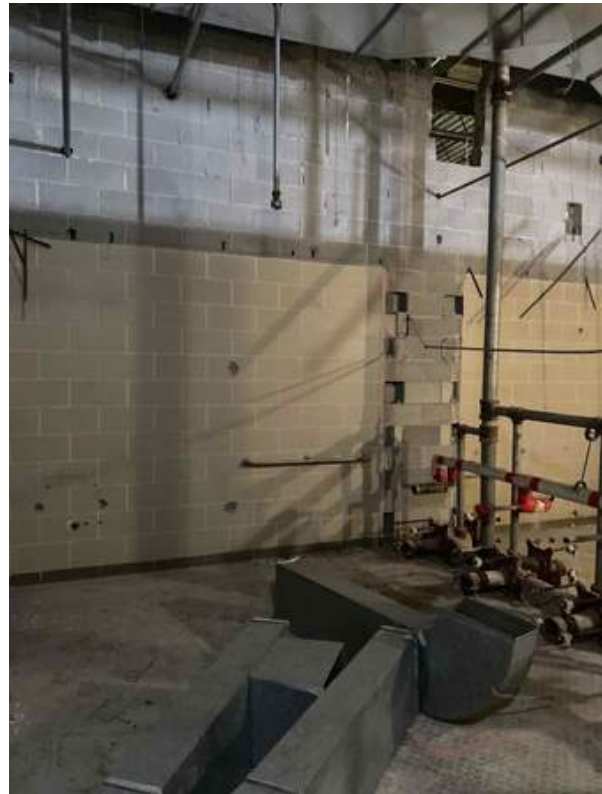
ICS Weekly Project Report

June 14, 2021



ISD #465 Litchfield Public Schools
2019 Referendum

Lake Ripley – Restroom Demolition





ICS Weekly Project Report

June 14, 2021



ISD #465 Litchfield Public Schools
2019 Referendum

Lake Ripley – Media Center Demolition





ICS Weekly Project Report

June 14, 2021



ISD #465 Litchfield Public Schools
2019 Referendum

Lake Ripley – Special Education Suite Door/Wall Framing





ICS Weekly Project Report

June 14, 2021



ISD #465 Litchfield Public Schools
2019 Referendum

Middle School – Demolition progress in the existing Admin and FACS areas.





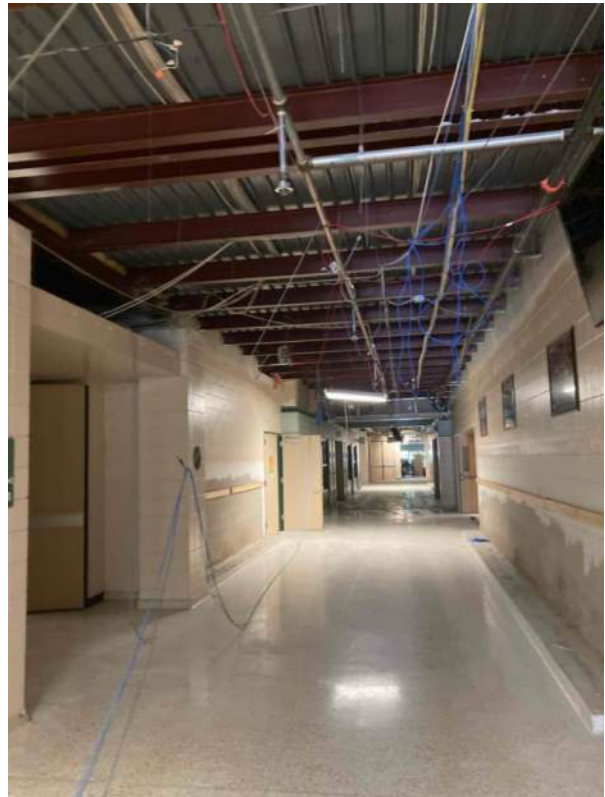
ICS Weekly Project Report

June 14, 2021



ISD #465 Litchfield Public Schools
2019 Referendum

Middle School – Demolition progress in the existing Special Ed. area and corridors.





ICS Weekly Project Report

June 14, 2021



ISD #465 Litchfield Public Schools
2019 Referendum

High School – Demolition in the existing Special Ed. Area.





ICS Weekly Project Report



June 14, 2021



ISD #465 Litchfield Public Schools
2019 Referendum

High School – Demolition in the existing Admin and exiting Auditorium/future Commons





	<p align="center">ICS Weekly Project Report June 21, 2021</p>
	<p align="center">ISD #465 Litchfield Public Schools 2019 Referendum</p>

District Wide

- **Completed for Week ending Friday, June 18, 2021**
 - Groundbreaking/Ribbon cutting ceremony took place 6/14/21
 - POC meeting took place 6/16

Lake Ripley Elementary

- **Completed Week/ ending Friday, June 18, 2021**
 - Interior renovations Summer 2021/2022 work
 - Continued ductwork HVAC installation
 - Continued framing walls and started drywall in Special Education Suite
 - Started installing plywood backing in classrooms
 - Hydronic piping and plumbing rough in installation in classrooms
 - Continued mechanical and electrical rough ins in corridors
- **Planned for Week ending Friday, June 25, 2021**
 - Interior renovations Summer 2021/2022 work
 - Install wall backing for casework and bathroom accessories
 - Cut down markerboards and tackboards
 - Finished removing cooler and freezer out of old kitchen
 - Electrical rough ins in classrooms and media center
 - Removal of HVAC units out of mezzanine level
 - Continue drywall work in new Special Education Suite/old Administration Offices
 - Start drywall work in classrooms
 - Concrete floor cutting in large bathrooms for underground plumbing
 - Continue mechanical and electrical rough ins in corridors

	<p align="center">ICS Weekly Project Report June 21, 2021</p>
	<p align="center">ISD #465 Litchfield Public Schools 2019 Referendum</p>

Middle School/High School

- **Completed Week ending Friday, June 18, 2021**
 - Continued HVAC duct installation throughout.
 - Continued mechanical and electrical demolition throughout.
 - Middle School
 - Completed saw-cutting and slab removal in the SPED Suite and FACS Lab.
 - Began underground plumbing and electrical rough-in.
 - High School
 - Continued concrete slab removal and excavation in the Commons area.
 - Began shoring walls and roof structure in in the Commons area.
- **Planned for Week ending Friday, June 25, 2021**
 - Continue concrete saw-cutting and removals throughout.
 - Continue mechanical and electrical demolition throughout.
 - Continue overhead mechanical and electrical rough-in throughout.
 - Middle School
 - Complete footings and foundations for new structural steel.
 - Begin structural steel erection.
 - Begin framing metal stud partitions.
 - Complete underground plumbing rough-in.
 - High School
 - Continue the installation of shoring in the Commons.
 - Continue wall demolition and excavation in the Commons.
 - Continue metal stud partition wall framing.



ICS Weekly Project Report

June 21, 2021



ISD #465 Litchfield Public Schools
2019 Referendum

Lake Ripley – Large Restroom Demolition and Concrete Slab Cutting





ICS Weekly Project Report

June 21, 2021



ISD #465 Litchfield Public Schools
2019 Referendum

Lake Ripley – Special Education Suite Drywall Framing





ICS Weekly Project Report

June 21, 2021



ISD #465 Litchfield Public Schools
2019 Referendum

Lake Ripley – Corridor Mechanical Electrical Rough ins and Duct Insulation





ICS Weekly Project Report

June 21, 2021



ISD #465 Litchfield Public Schools
2019 Referendum

Lake Ripley – Old Cafeteria Demolition and Freezer/Cooler Removed





ICS Weekly Project Report

June 21, 2021



ISD #465 Litchfield Public Schools
2019 Referendum

Middle School – Underground plumbing and electrical rough-in.





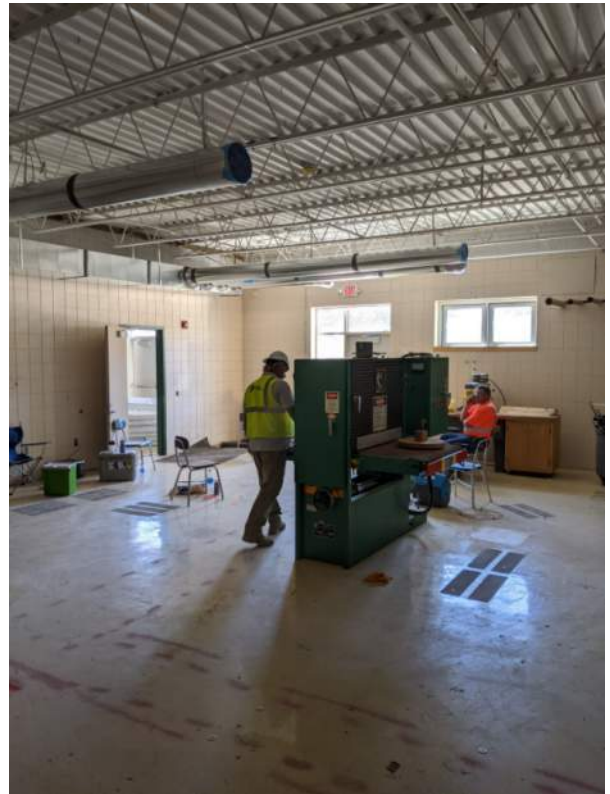
ICS Weekly Project Report

June 21, 2021



ISD #465 Litchfield Public Schools
2019 Referendum

Middle School – Duct work rough-in.





ICS Weekly Project Report

June 21, 2021



ISD #465 Litchfield Public Schools
2019 Referendum

High School – Commons Area slab removal and excavation.





ICS Weekly Project Report



June 21, 2021



ISD #465 Litchfield Public Schools
2019 Referendum

High School – Sped. Suite wall framing and Admin area demolition progress.





	<p align="center">ICS Weekly Project Report June 28, 2021</p>
	<p align="center">ISD #465 Litchfield Public Schools 2019 Referendum</p>

District Wide

- **Planned for Week ending Friday, July 2, 2021**
 - POC meeting scheduled for 06/30/21

Lake Ripley Elementary

- **Completed Week/ ending Friday, June 25, 2021**
 - Interior renovations Summer 2021/2022 work
 - Installed wall backing for casework and bathroom accessories
 - Cut down markerboards and tackboards
 - Finished removing cooler and freezer out of old kitchen
 - Concrete floor slab removal in old kitchen for underground plumbing
 - Electrical rough ins in classrooms and media center
 - Continued drywall work in new Special Education Suite/old Administration Offices
 - Started drywall work in classrooms
 - Concrete floor cutting in large bathrooms for underground plumbing
 - Continued mechanical and electrical rough ins in corridors
- **Planned for Week ending Friday, July 2, 2021**
 - Interior renovations Summer 2021/2022 work
 - Tape, mud, and sand drywall in classrooms
 - Start prep work for painting in classrooms
 - Continue mechanical and electrical rough ins in corridors
 - Pour back concrete in bathrooms
 - Start wall framing in bathrooms
 - Finish drywall and start taping, mudding, and sanding in Special Education Suite
 - Install ductwork, and underground plumbing in new staff lounge/old cafeteria
 - Removal of HVAC units out of mezzanine level
 - Wall framing of offices and classrooms adjacent to Media Center

	<p align="center">ICS Weekly Project Report June 28, 2021</p>
	<p align="center">ISD #465 Litchfield Public Schools 2019 Referendum</p>

Middle School/High School

- **Completed Week ending Friday, June 25, 2021**
 - Middle School
 - Concrete slab saw-cutting and removal nearing completion.
 - Began underground plumbing rough-in.
 - Completed structural concrete piers required for new structural steel.
 - Continued overhead mechanical and electrical rough-in.
 - High School
 - Continued demolition and earthwork in the Commons.
 - Completed concrete slab saw-cutting and removal.
 - Began underground plumbing rough-in.
 - Continued overhead mechanical and electrical rough-in.
- **Planned for Week ending Friday, July 2, 2021**
 - Middle School
 - Complete all concrete slab saw-cutting and removal.
 - Complete all underground plumbing rough-in.
 - Begin pouring back concrete slabs at underground plumbing trenches.
 - Begin framing metal stud partition walls.
 - Begin structural steel installation.
 - High School
 - Complete all underground plumbing rough-in.
 - Complete all concrete infills at underground plumbing trenches.
 - Complete concrete piers required for new structural steel.
 - Continue masonry wall demolition at the Commons.
 - Continue overhead mechanical and electrical rough-in.



ICS Weekly Project Report

June 28, 2021



ISD #465 Litchfield Public Schools
2019 Referendum

Lake Ripley – Large Restroom Underground Plumbing





ICS Weekly Project Report

June 28, 2021



ISD #465 Litchfield Public Schools
2019 Referendum

Lake Ripley – Temporary Shoring for Mezzanine Openings and Office/Flex Area Wall Framing





ICS Weekly Project Report

June 28, 2021



ISD #465 Litchfield Public Schools
2019 Referendum

Lake Ripley – Media Center/ STEAM Progress





ICS Weekly Project Report

June 28, 2021



ISD #465 Litchfield Public Schools
2019 Referendum

Lake Ripley – Classroom Drywall Progress for Plumbing and Casework





ICS Weekly Project Report

June 28, 2021



ISD #465 Litchfield Public Schools
2019 Referendum

Middle School – Concrete slab removal and underground plumbing rough-in.





ICS Weekly Project Report

June 28, 2021



ISD #465 Litchfield Public Schools
2019 Referendum

Middle School – Concrete infills at underground plumbing trenches.





ICS Weekly Project Report

June 28, 2021



ISD #465 Litchfield Public Schools
2019 Referendum

Middle School – Structural concrete piers.





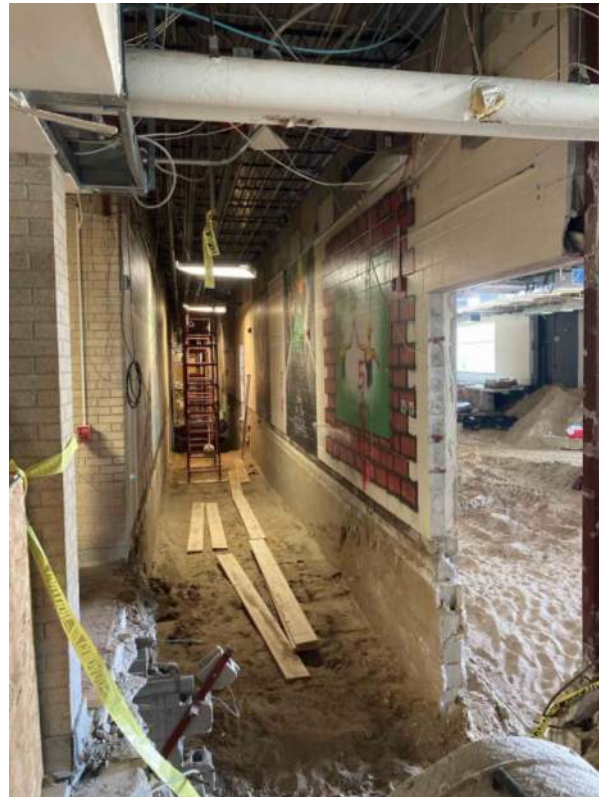
ICS Weekly Project Report

June 28, 2021



ISD #465 Litchfield Public Schools
2019 Referendum

High School – Demolition progress at the future Commons and adjacent corridor.





ICS Weekly Project Report

June 28, 2021



ISD #465 Litchfield Public Schools
2019 Referendum

High School – Concrete slab removal and underground plumbing rough-in.

