



BID AUTHORIZATION PRESENTATION HIGH/MIDDLE SCHOOL -LAKE RIPLEY – INTERIOR RENOVATIONS

Design Development Phase High/Middle School Interior Renovations

Construction Document Phase Lake Ripley Elementary Interior Renovations

August 24, 2020

FOR TONIGHT

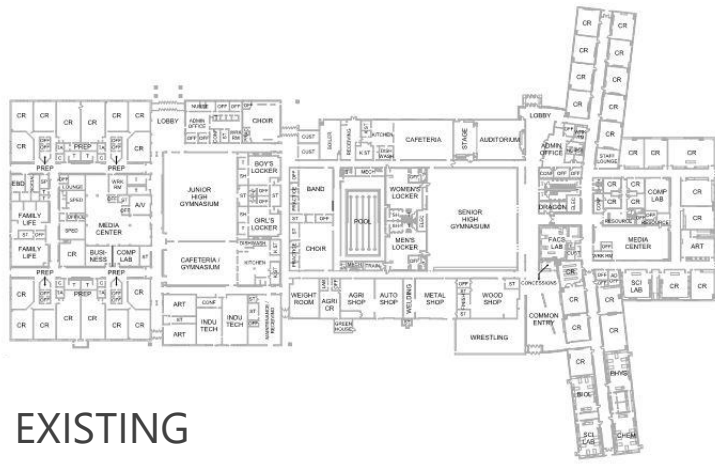


- Overall Project Update
- High/Middle School Interior Renovations Design Development Phase
- High/Middle School Interior Renovations Timeline
- Lake Ripley Interior Renovations Construction Document Phase
- Lake Ripley Interior Renovations Timeline
- Next Steps

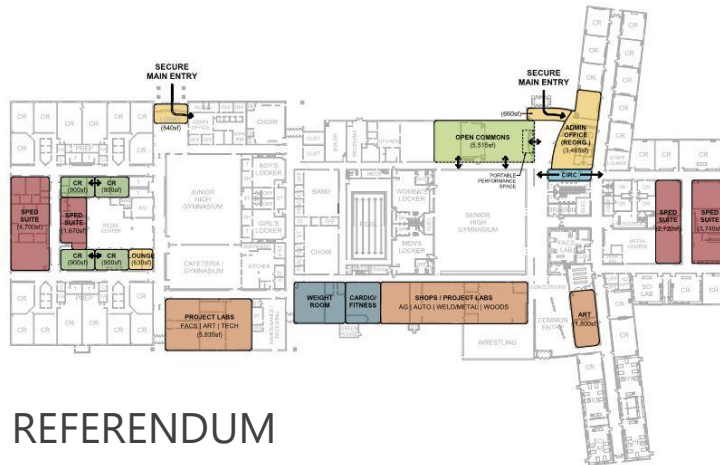
MAJOR PROJECT LIST

NAME	LOCATION	CONSTRUCTION START	CONSTRUCTION DURATION
LAKE RIPLEY SITE PROJECT	Lake Ripley Elementary School	June 2020	2-3 Months
BLEACHER REPLACEMENT	Litchfield Middle School	August 2020	1 Week
KITCHEN, CAFETERIA and ADMINISTRATION	Lake Ripley Elementary School	October 2020	5-6 Months
LAKE RIPLEY INTERIOR RENOVATIONS	Lake Ripley Elementary School	Anticipated June 2021 Anticipated June 2022	6 Months (2 Phases)
HIGH SCHOOL MIDDLE SCHOOL RENOVATIONS	Litchfield High School and Middle School	Anticipated June 2021 Anticipated June 2022	6 Months (2 Phases)
HIGH SCHOOL MIDDLE SCHOOL SITE PROJECT	Litchfield High School and Middle School	Anticipated June 2022	3 Months

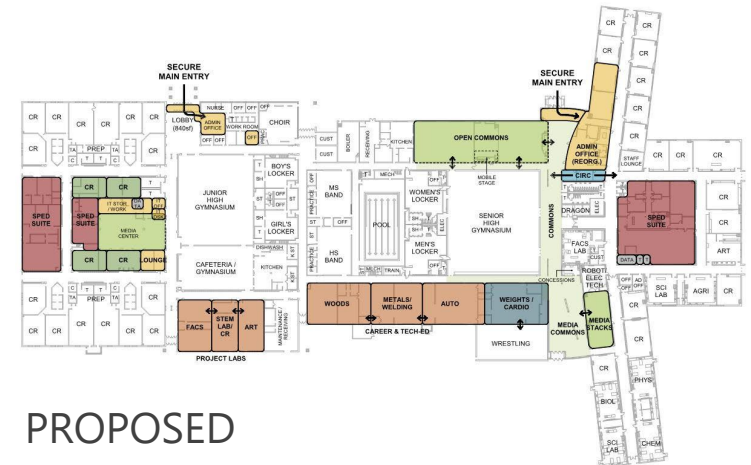
PLAN EVOLUTION



EXISTING



REFERENDUM



PROPOSED



BASE PROJECT SCOPE

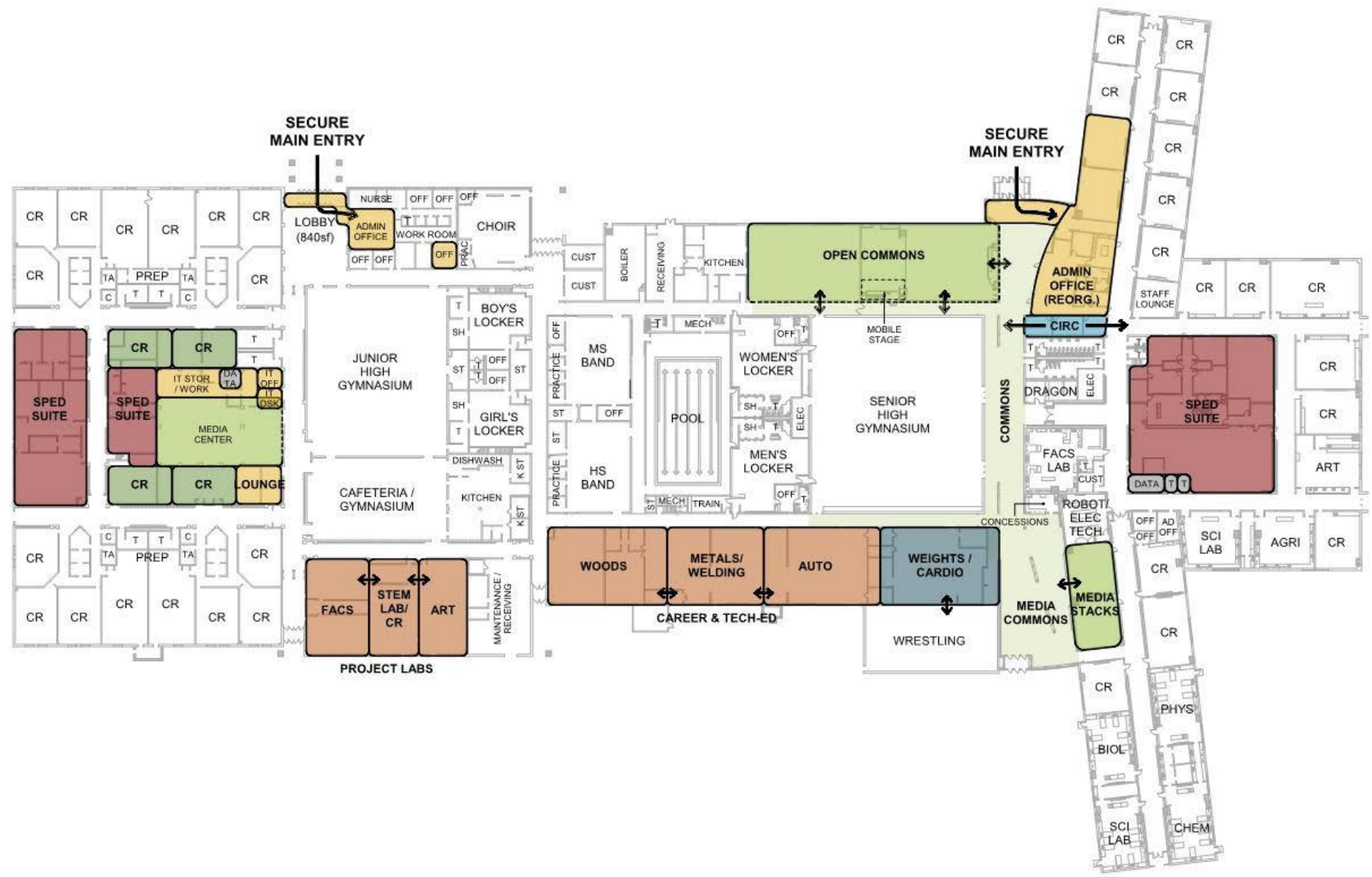
- Reorganize SPED Suite and Sensory Room
- Reorganize Intervention Suite
- Remodel Media Center
- Create Open / Flex Spaces
- New Staff Area



UPDATED PROJECT SCOPE

- Two separate SPED Suites, relocate Sensory
- Right-size Intervention Suite for program needs
- Introduce STEAM and Flex Classrooms with Media Center
- Similar size and location of Open / Flex Spaces
- Staff Area with Toilet and Nursing Rooms

LITCHFIELD MIDDLE/HIGH SCHOOL – PROPOSED PLAN

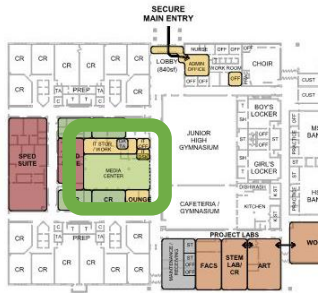


USER GROUP PARTICIPATION LITCHFIELD MIDDLE/HIGH SCHOOL



= STAFF HOURS!

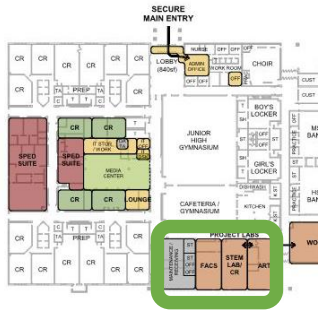
LMS – USER GROUP PLAN – MEDIA CENTER



Media Center & District IT



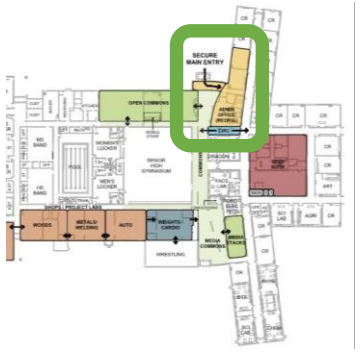
LMS – USER GROUP PLAN – ART/STEM/FACS



Art/STEM/FACS



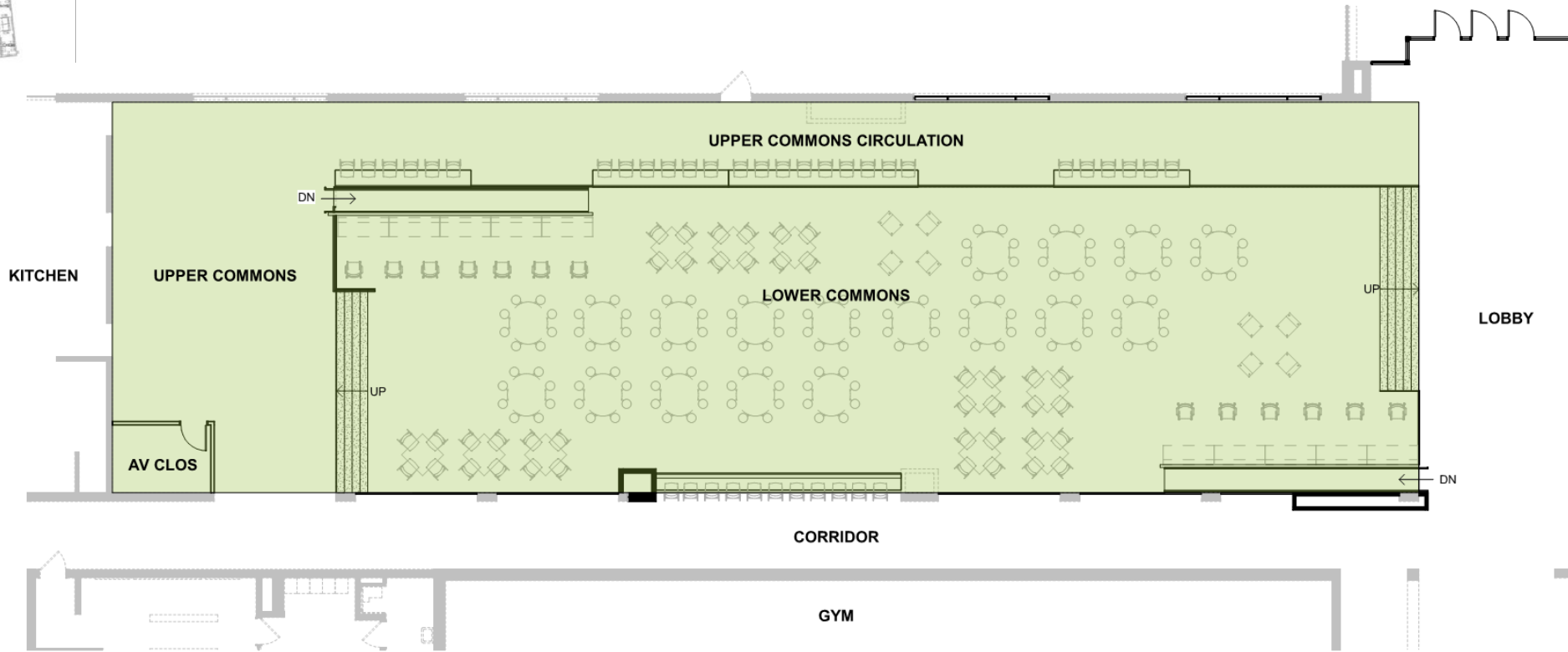
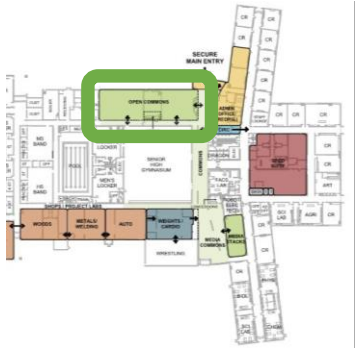
LHS – USER GROUP PLAN – SECURE VESTIBULE/ADMIN



Secure Entry & Admin Office



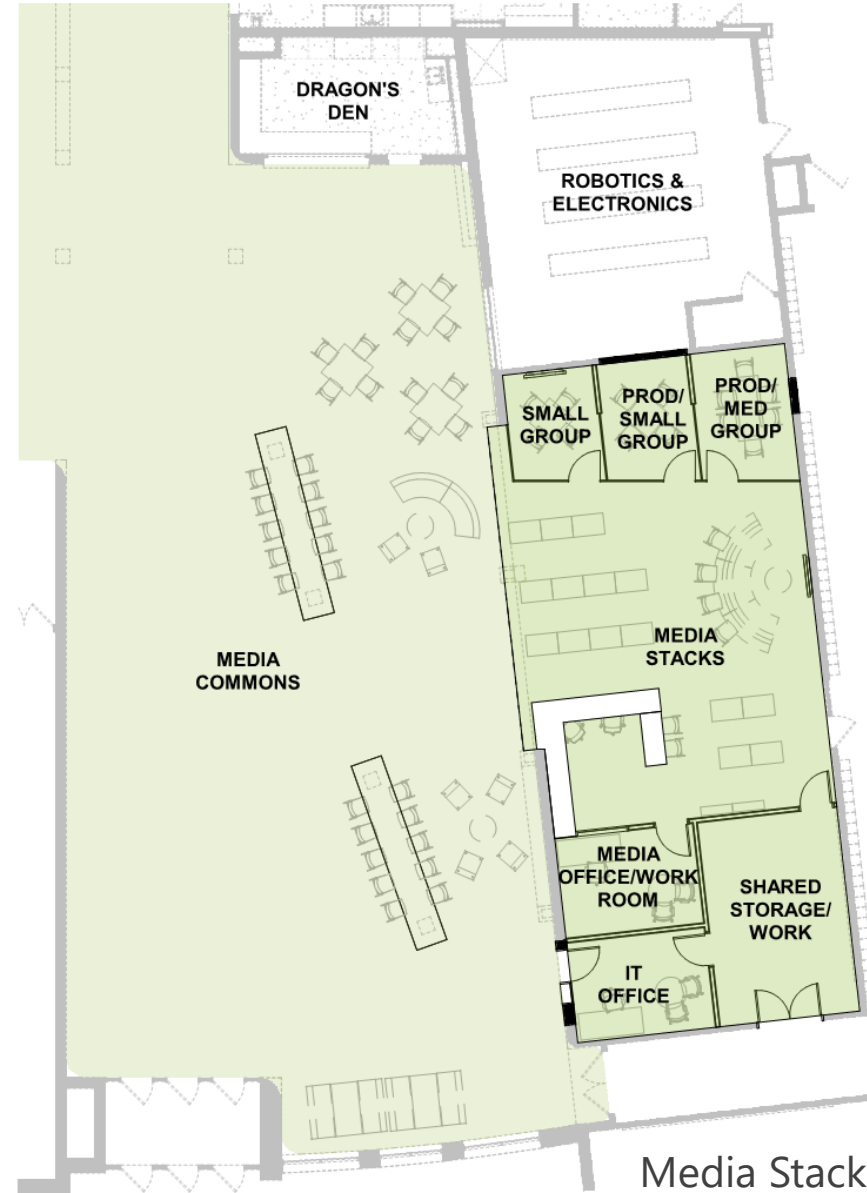
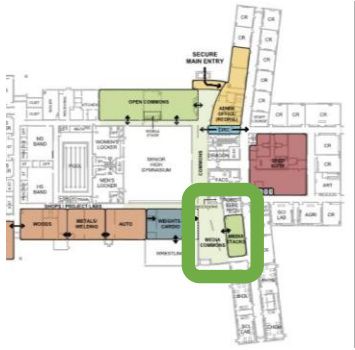
LHS – USER GROUP PLAN – COMMONS/CAFETERIA



Cafeteria / Commons



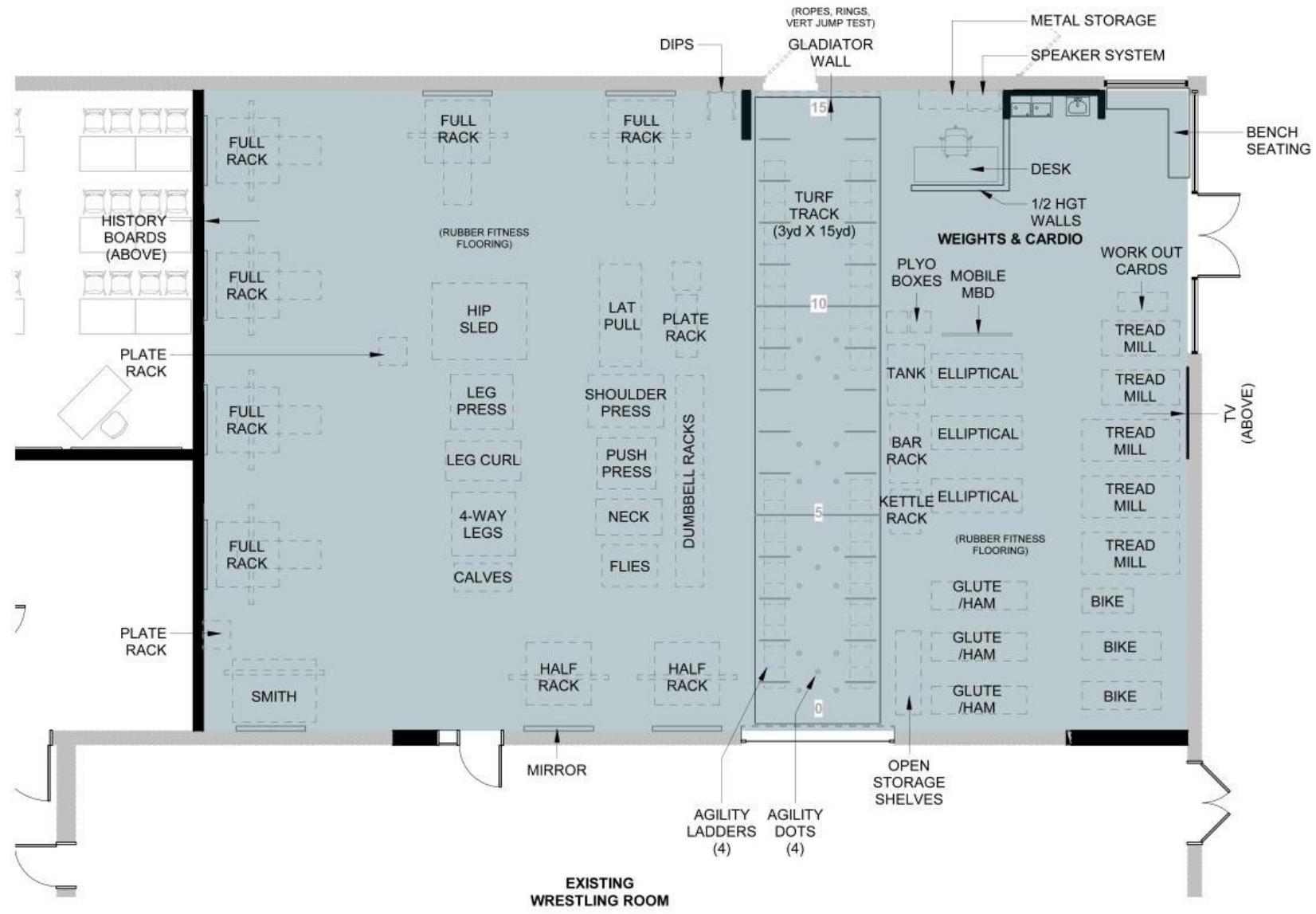
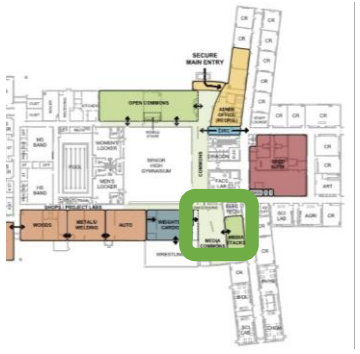
LHS – USER GROUP PLAN – MEDIA CENTER



Media Stacks, Commons, & IT



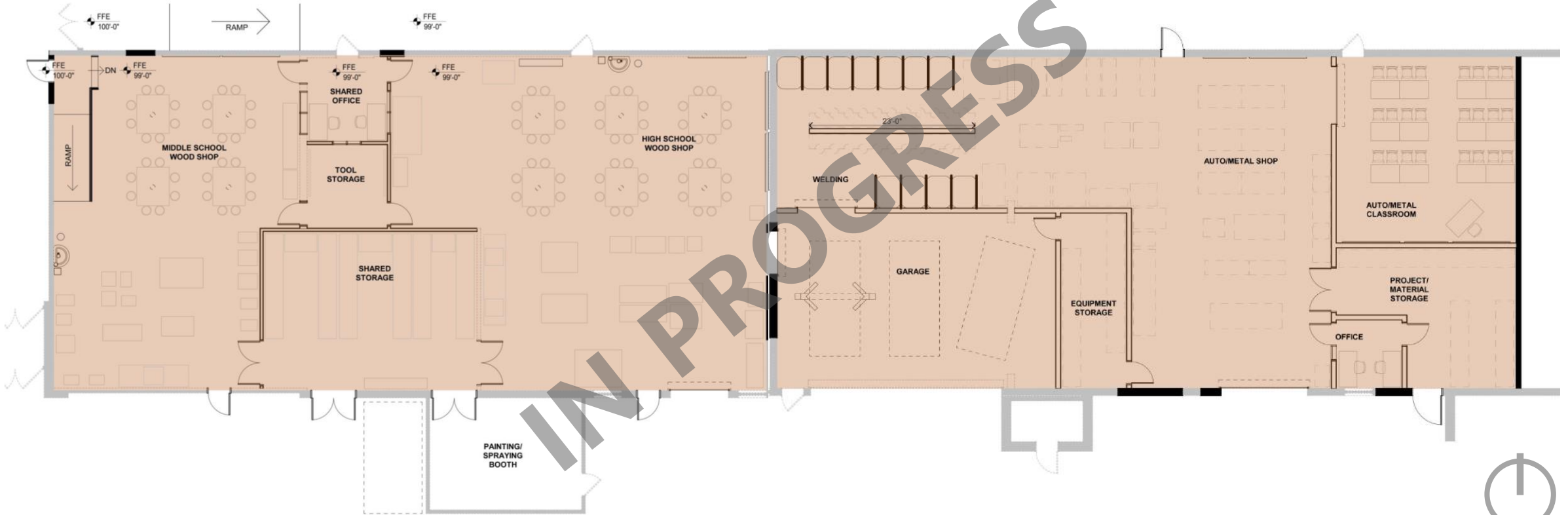
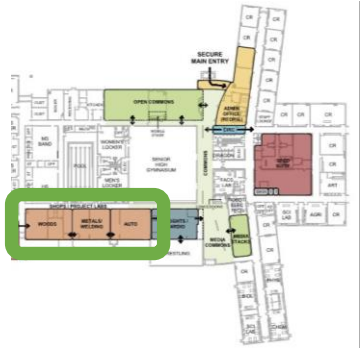
LHS – USER GROUP PLAN – WEIGHTS & CARDIO



Weights & Cardio



LHS – USER GROUP PLAN – CAREER AND TECH ED



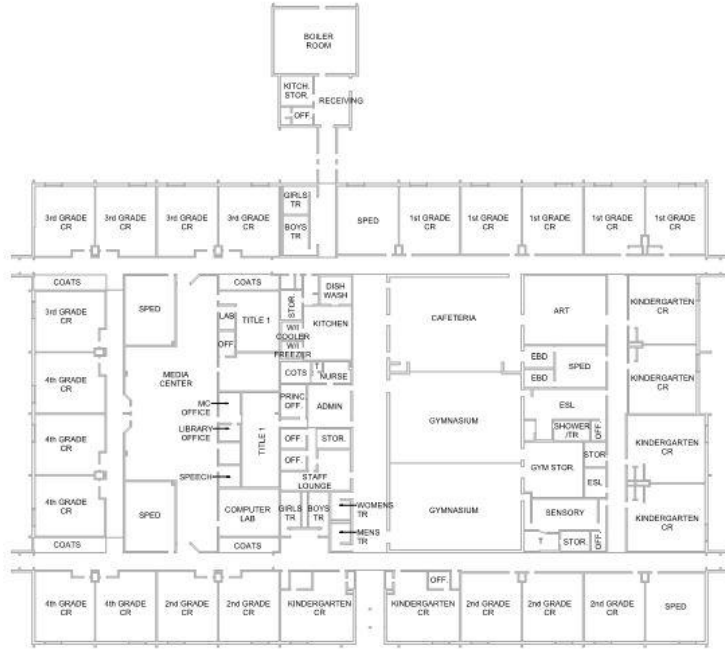
Metal, Auto, & Wood Shop



Project Timeline High/Middle School Interior Renovations

- Schematic / Design Development Design: June 2020-August 2020
- Construction Documents: September 2020 –October 2020
- Bidding: November 2020 –December 2020
- Construction Starts: June 2021
- Project Complete: September 2022

PLAN EVOLUTION



EXISTING



REFERENDUM



PROPOSED



BASE PROJECT SCOPE

- Reorganize SPED Suite and Sensory Room
- Reorganize Intervention Suite
- Remodel Media Center
- Create Open / Flex Spaces
- New Staff Area

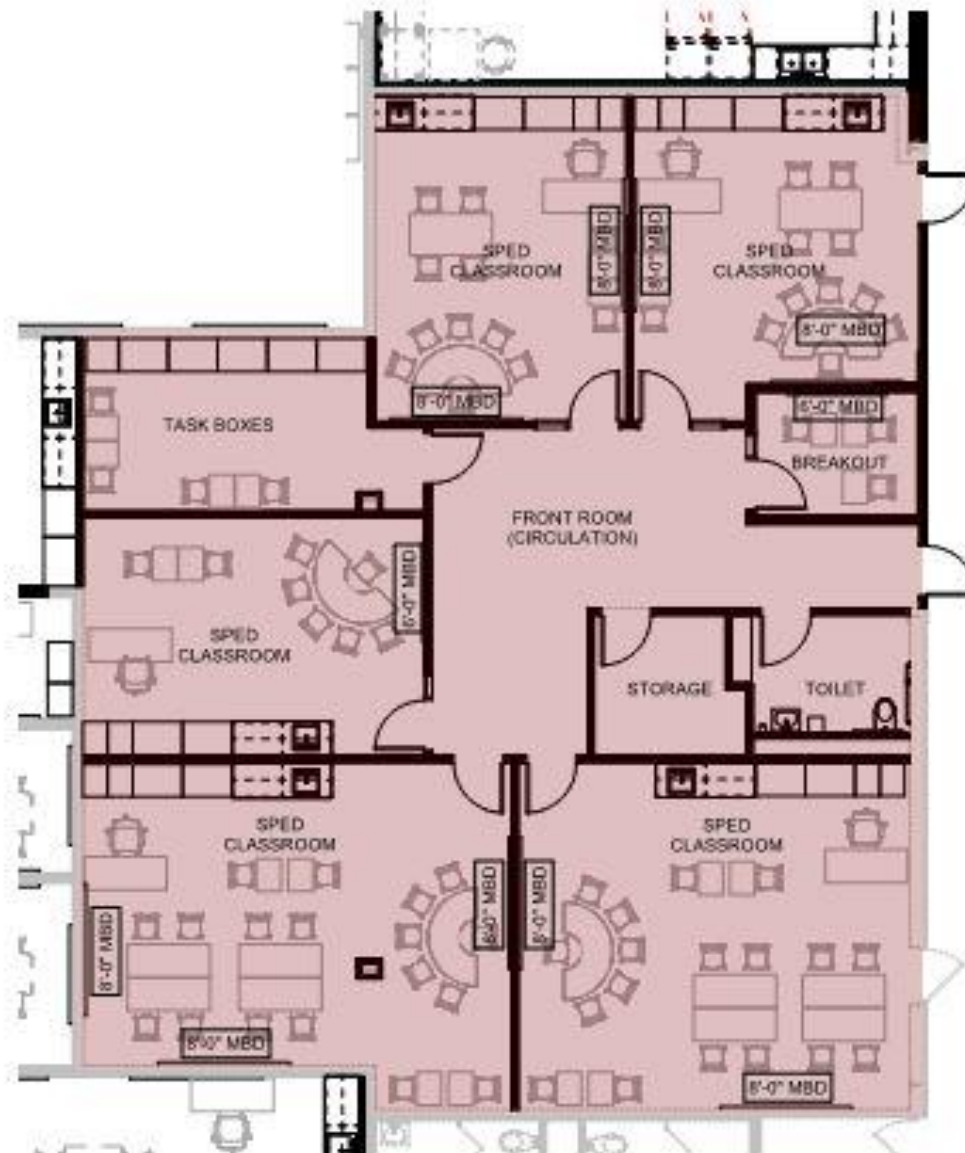


UPDATED PROJECT SCOPE

- Two separate SPED Suites, relocate Sensory
- Right-size Intervention Suite for program needs
- Introduce STEAM and Flex Classrooms with Media Center
- Similar size and location of Open / Flex Spaces
- Staff Area with Toilet and Nursing Rooms



LRES - USER GROUP PLAN - SPED SUITES



LD SPED Suite



EBD SPED Suite & Sensory



LRES - USER GROUP PLAN - INTERVENTION SUITE



Intervention Suite



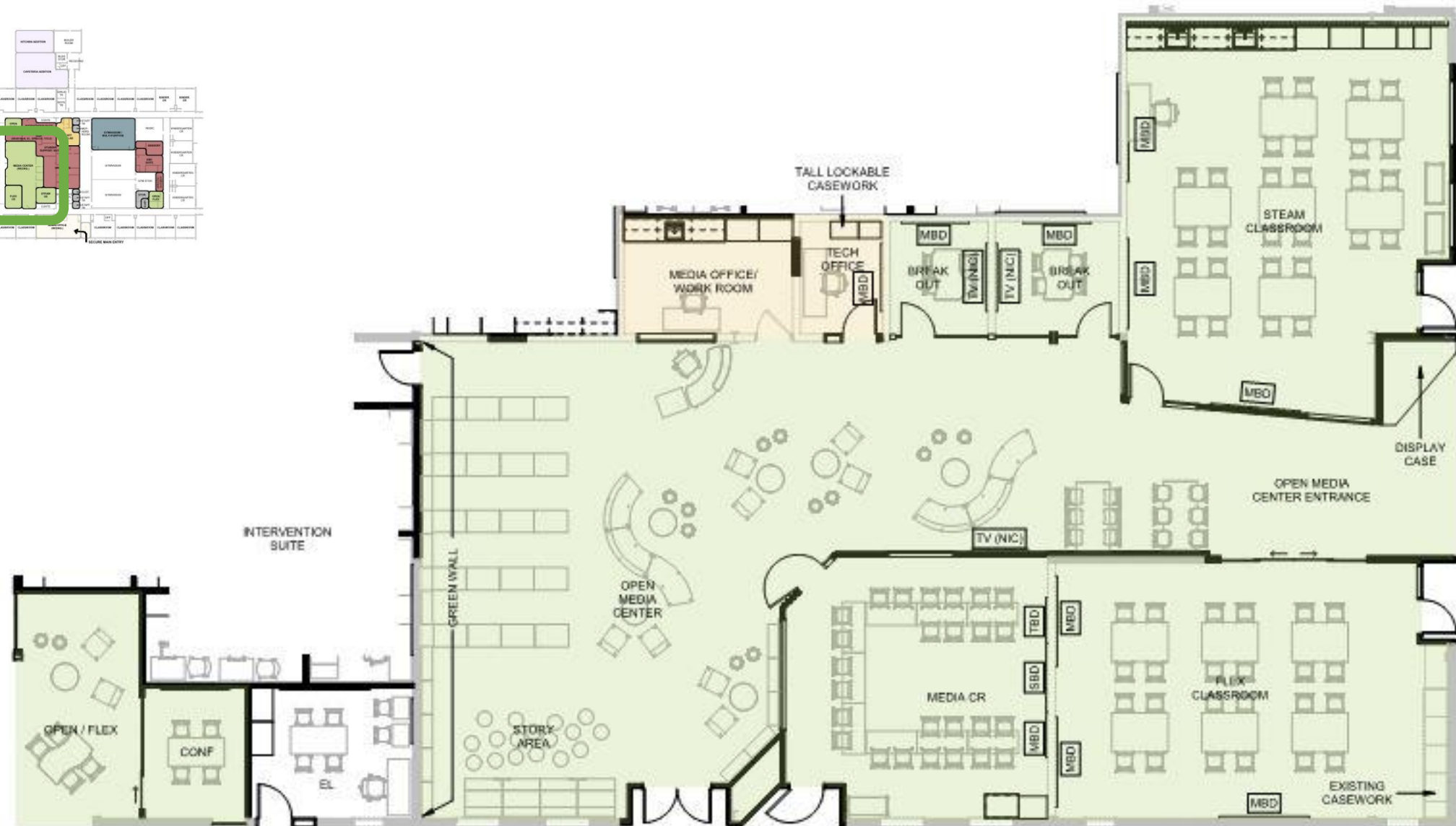
LRES - USER GROUP PLAN – STAFF AREA



Staff Area



LRES - USER GROUP PLAN - MEDIA CENTER



Media Center/Break-out/Media Classroom, STEAM Classroom, Flex Classroom, Open/Flex



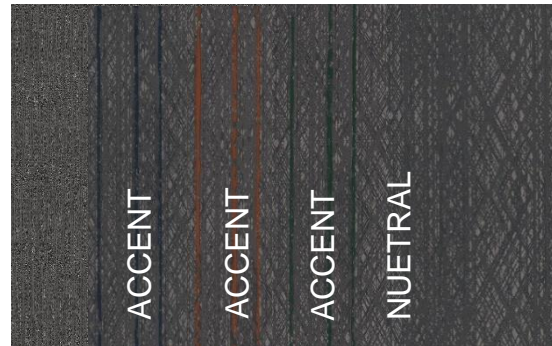
LRES - MEDIA CENTER - AXON



LRES – INTERIOR MATERIALS



TACK WALL



RESILIENT
CARPET TILE

NEW MATERIALS



PAINT

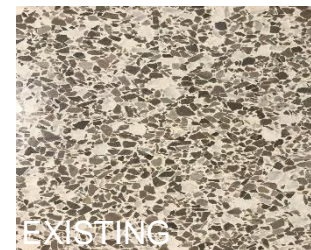


CASEWORK



LVT

EXISTING MATERIALS



LRES - MEDIA CENTER



LRES - MEDIA CENTER



LRES – OPEN/FLEX



Project Timeline Lake Ripley Interior Renovations



- Schematic / Design Development Design: April 2020-June 2020



- Construction Documents: July 2020 – September 2020



- Bidding: October 2020 – November 2020



- Construction Starts: June 2021



- Project Complete: September 2022

Next Steps



/ CONSTRUCTION

Complete Lake Ripley Site and Parking Lot Project
Start Lake Ripley Kitchen and Cafeteria Addition
Middle School Bleachers

/ Design Development

Middle School/High School Interior Renovations
Middle School/High School Site Renovations

/ CONSTRUCTION



Q&A

